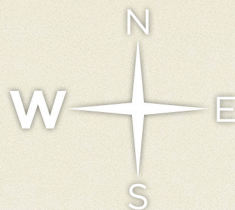


Waste and Cleansing Services Guide



2023/24



Bayside Council, NSW

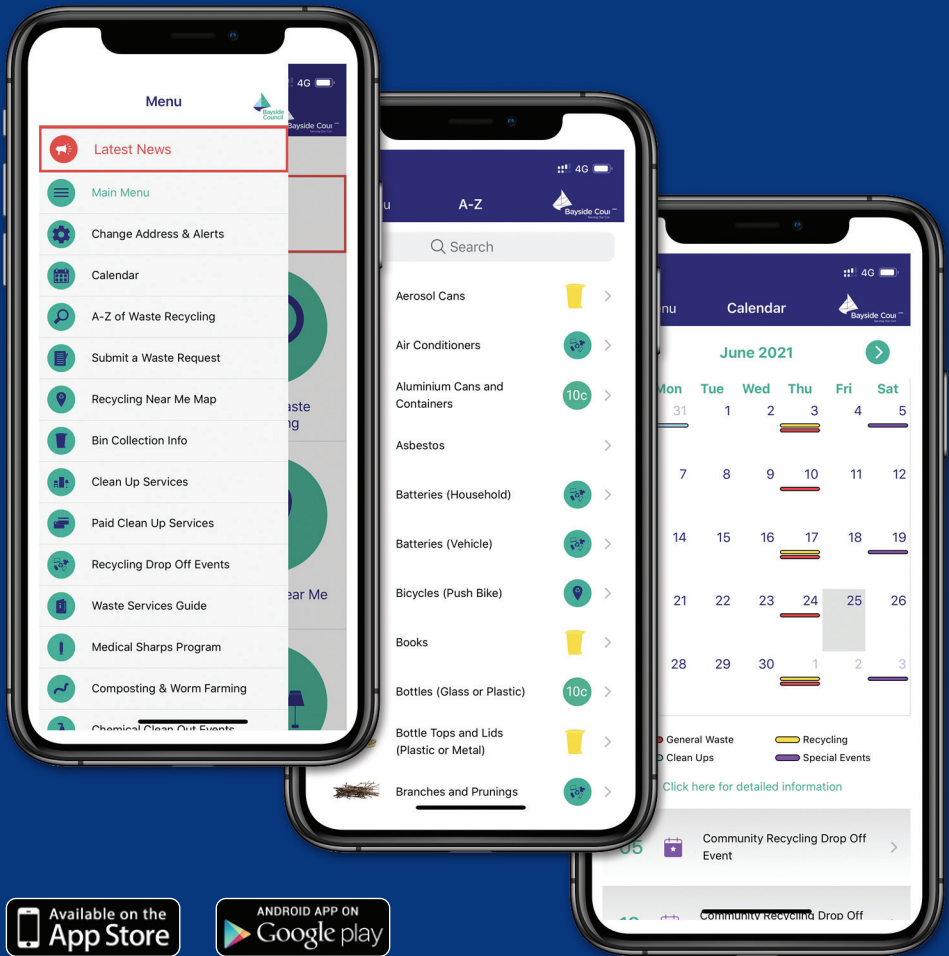
Circular Waste Strategy and Action Plan Program

Category
Winner
2023

**NATIONAL AWARDS
FOR LOCAL GOVERNMENT**

2023 Winners and
Honourable Mentions

Bayside Council's **Waste App**



The **Waste App** provides the community with their respective garbage, organics, recycling and clean-up collection dates, as well as providing special events and drop off dates, alerts, options to report missed services, bin repairs, illegal dumping, education and so much more.

For those that do not own a smart phone, the app also produces a web widget available on Council's website.

Message from the Mayor



Dear Resident,

We all have a role to play in reducing waste.

I am very proud of Bayside Council's Waste Avoidance and Resource Recovery Strategy 2018/2030 which embodies the circular economy model. The strategy is a rolling program with continuous action plans that have already been recognised through 13 previous state environmental awards in multiple categories.

This strategy will be updated in 2023/2024 to encompass even more innovative and leading circular economy initiatives.

In addition, Bayside Council recently won the prestigious 2023 National Award for Local Government in the Waste Management category. We were competing against 537 councils Australia-wide. The award recognises Bayside Council's ongoing work and achievements stemming from our Circular Economy Strategy and Annual Action Plans. These seek to promote and encourage ways to use waste as a resource by maximising the amount of reusable or recyclable material returned to the economy whilst also reducing the amount of waste sent to landfill.

Your level of support for reducing the amount of waste going into landfill is vital. You can assist by utilising the correct solutions for your waste and recycling needs. Please use this guide to help you with your household waste disposal. Thank you for making a positive contribution to our environment.

If you have any enquiries, please contact Council on 1300 581 299, visit our website at www.bayside.nsw.gov.au and/or download the free Bayside Waste Services app.

Regards,

A handwritten signature in black ink, appearing to read 'Bill Saravinovski'.

Cr Bill Saravinovski
Mayor

Strategy

Garbage &
Organics

Recycling

Green
Waste

Clean Up

Community
Drop Offs

Other
Initiatives

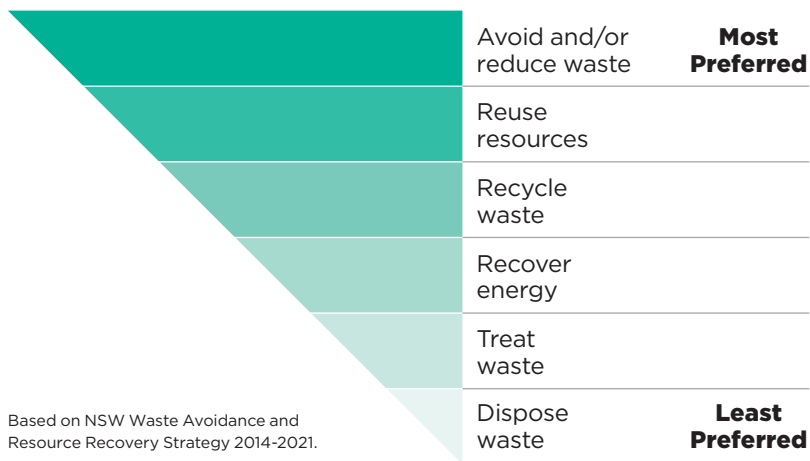
The Waste Hierarchy

The concept of a 'waste hierarchy' is enshrined in most modern waste management policies and strategies.

The hierarchy identifies the preferred approach to waste management, with avoidance and reduction of waste being the most preferable option, and disposal the least preferable.

Whilst waste avoidance is most preferable, it is also one of the most difficult areas for Council to control. Significant improvements at the 'top' of the waste hierarchy require individuals and families to act as community waste management champions at a household-level. These actions will be supported by Council providing avoidance and re-use opportunities, and effective community education.

Council has more control over the lower portion of the hierarchy, through the choice of bin systems and technologies used to process materials. However, individuals have a large influence on how effective those systems are, especially in terms of using the bin systems correctly. Council will provide education to ensure that residents have the required information and knowledge to use the systems correctly.



Circular Economy Model



Council has modified and extended the ‘waste hierarchy’, positioning the community at the centre. Through responsible citizenship and Council leadership, waste materials are returned to the community through initiatives and innovation, striving for a circular economy.

The circular model is easily identified as a 7R Strategy. When the 7R circular economy model has been applied, any materials not suitable for recovery can be treated to reduce its environmental impact (e.g. medical waste) and/or disposed to landfill.

7R Strategy

Examples

Refuse waste	Avoid using single-use plastics
Reduce waste	Choose products with longer life cycle and reduce food wastage
Re-use items	Donate, instead of throwing out usable items
Repair items	If broken, attempt to fix item
Re-purpose items	Use unwanted plastic takeaway containers to make a worm farm
Recycle items	Process used office paper to make recycled office paper
Recover items	Thermally treat materials (processed engineered fuels) that cannot be reused or recycled to generate heat and electricity

Garbage and Organics Recovery Bin

The Bayside red-lidded bin is sent to an advanced processing facility where the organic material (food scraps and garden waste) is mechanically and biologically extracted and treated. This material is turned into compost and applied to a Tailings Dam on an old mine site that requires rehabilitation.

Please make sure your bin is not overweight, the lid is closed and that you dispose of accepted items only.



ACCEPTED ITEMS



Plastic Bags & Soft Plastics



Polystyrene & Foam



Broken Ceramics & Glasses



Food & Garden Organics



Nappies, Wipes & Paper Towels



Unwearable Shoes or Clothes

NOT ACCEPTED ITEMS



Electronics & Printer Inks



Gas Bottles



All Types of Batteries



Building Material



Medical Waste



Chemicals, Oils & Paints



Garden Hoses

Garbage and Organics Recovery Bin



- ☐ We did NOT empty your bin because the bin(s)...
- ☐ We emptied your bin, but the bin(s)...
- ☐ 1. Was overweight
- ☐ 2. Was overfull (did not close)
- ☐ 3. Contained building material
- ☐ 4. Contained hazardous material (e.g. car batteries, chemicals)

Please...

- ☐ Do not put heavy material in your bin
- ☐ Make sure the bin lid is closed
- ☐ Do not put building material in your bin
- ☐ Do not put hazardous material in your bin

If your bin was not collected, but you have now corrected the problem, please call Council on **1300 581 299** or **9562 1666** to arrange for the collection of your bin

Garbage and Organics Recovery Bin

Strategy

Garbage & Organics

Recycling

Green Waste

Clean Up

Community Drop Offs

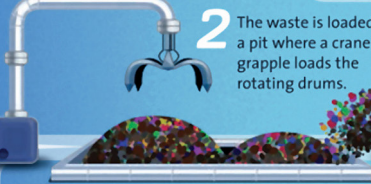
Other Initiatives

THE WASTE JOURNEY

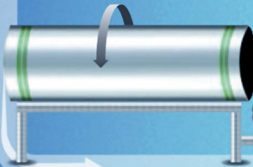
1 Collected household waste is taken to Veolia's Woodlawn eco-precinct by rail and road.



2 The waste is loaded into a pit where a crane grapple loads the rotating drums.



3 Waste is combined with air and water in large rotating bio-drums to start degradation and prepare for separation.



4 Inorganic materials and metals are separated for recycling and recovery.



Metals will be recycled



6 Energy is used to power over 10,000 homes. Waste heat is utilised for onsite aquaculture and horticulture.

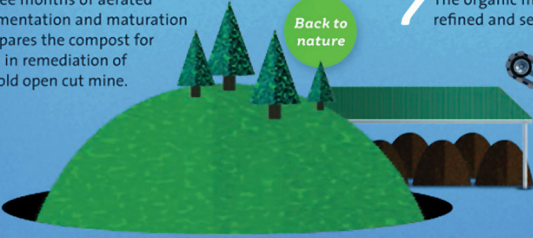


Waste energy for homes

5 Any residual waste is transferred to the bioreactor landfill which produces methane gas that is converted into energy and waste heat.



8 Three months of aerated fermentation and maturation prepares the compost for use in remediation of an old open cut mine.



Back to nature

7 The organic material is further refined and sent for composting.



Recycling Bin

Contamination in yellow lidded recycling bins can be a problem at certain locations, particularly plastic bags.

In 2023/24, and beyond, Council will be ramping up resident education to improve this behaviour.



Recycling Bin

- ☐ We did NOT empty your bin because the bin(s)...
- ☐ We emptied your bin, but the bin(s)...

- ☐ 1. Was overweight
- ☐ 2. Was overfull (lid not closed)
- ☐ 3. Contained household garbage (e.g. food scraps, nappies)
- ☐ 4. Contained non-recyclable material (e.g. plastic bags, clingwrap)
- ☐ 5. Contained materials placed in plastic bags

If your bin was not collected, but you have now corrected the problem, please call Council on **1300 581 299** or **9562 1666** to arrange for the collection of your bin

ACCEPTED ITEMS



Tins, Cans & Aluminium



Empty Drink Cartons



Empty Glass Bottles & Jars



Empty Plastic Containers



Paper & Cardboard

NOT ACCEPTED ITEMS



Plastic Bags & Soft Plastics



Electronics & Printer Inks



Gas Bottles



Chemicals, Oils & Paints



Garden Hoses



Broken Glass & Ceramics



Food or Liquid Waste



Garden Organics



Clothing or Shoes



Polystyrene & Foam



All Types of Batteries



Building Material



Medical Waste



Nappies, Wipes & Towels

Kerbside Bin Rules

The placing of incorrect materials in your collection bins is called contamination. Bins that are deemed to be contaminated by our drivers, **WILL BE TAGGED** and may be left unemptied. Please ensure correct materials are placed in your waste and recycling bins.

Bins should be placed out **PRIOR TO 5am** on your service days.

Bins should be a minimum of **30 cm APART**.

Please **DO NOT** place bins under trees, low power-lines or overhead obstructions.

If bins are obstructed by a parked car they **MAY NOT** be serviced.

Additional material beside or on top of your bin **MAY NOT** be collected.

Bin lids **MUST BE** closed completely – overfilling bins may result in spillages.

Bins that are overweight **WILL NOT** be serviced.

Jamming material into the bin results in blockages and the bin may only be partially emptied.



DAMAGED, MISSING BIN OR MISSED SERVICE

If your bin is damaged, stolen or has not been collected, call Council's Collection Contractor on **1800 079 390** or report it on the **Bayside Waste Service App**.

Garbage & Organics

Recycling

Green Waste

Clean Up

Community Drop Offs

Other Initiatives

Green Waste

HOUSEHOLD COMPOSTING

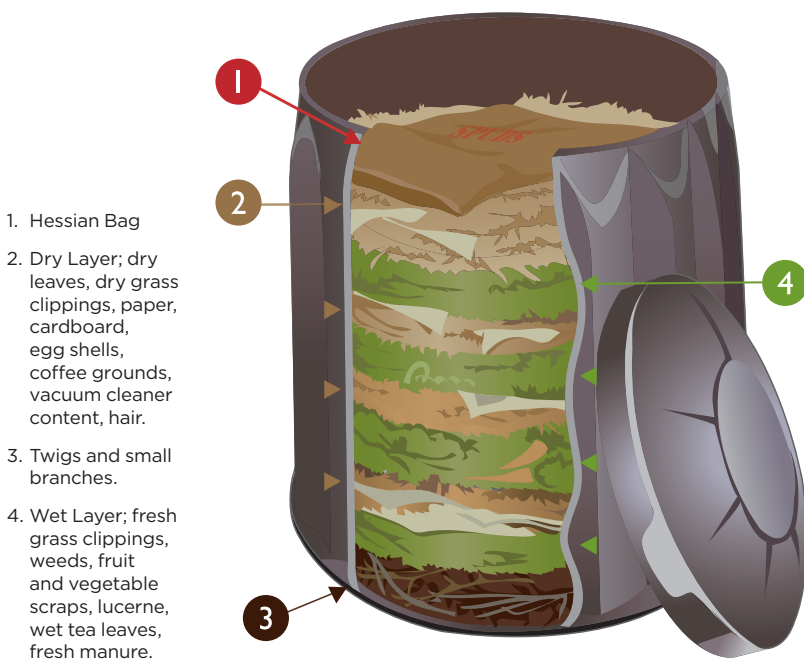
Home composting is a great option for avid gardeners. You can turn your leftover food and garden waste into organic fertiliser for your garden. The compost will help keep moisture in your soil and suppress weed growth.

WHAT SHOULD YOU COMPOST?

Anything that was once part of a plant can be composted in a compost bin. This includes, but is not limited to all your vegetable scraps (cooked or raw), tea leaves, coffee grounds, shredded paper, and potting mix. In addition, hair (human or animal) and vacuum cleaner dust be composted in a compost bin.

Mix as many of these items together as you can find and keep the whole lot moist and aerated.

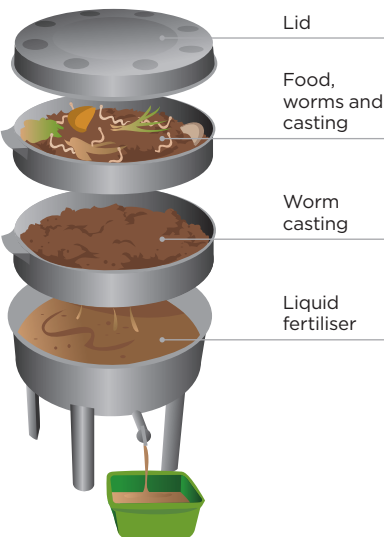
This will give the best results. It will take up to 10 weeks to produce good compost.



Green Waste

HOUSEHOLD WORM FARMING

Most of what was once part of a plant can be placed in a worm farm and transformed into organic soil and liquid fertiliser to be mixed with the soil in your garden. By doing this it will help to keep the moisture in garden soil and suppress weed growth.



FREE SCHOOL EDUCATION PROGRAM

Please contact Council on 1300 581 299 for a Sustainable Waste Management Education Officer to assist your school to register for a **FREE** waste minimisation, recycling, compost and/or worm farm course.

LIKE TO BUY?

You can buy your compost bin and worm farm from: Bayside Garden Centre, 1 Beach Street, Kogarah, phone (02) 9553 7346.



Strategy

Garbage &
Organics

Recycling

**Green
Waste**

Clean Up

Community
Drop Offs

Other
Initiatives

Clean Up Service

Bayside Council collects mattresses, metals and white goods from your scheduled or pre-booked clean up using a flatbed truck to maximise recycling and recovery rates. You can help by separating these items from the general waste pile.

The clean-up week in your zone will take place from 6am from the day specified on the fridge magnet, Council's website or the Bayside Waste Services app. Please follow guidelines to ensure your waste is compliant for removal.

Your scheduled collection dates are available on the Council issued calendar, on the Waste Services App, on the Council website, or available by calling Customer Service on 1300 581 299.

Below is an example of what your Clean Up calendar looks like. If you have not received a calendar, please contact Council on the above number for one to be sent to you.

2023 Clean Up, Waste and Recycling Calendar

January

S	M	T	W	T	F	S
1	2	3	4	5	6	7
8	9	10	11	12	13	14
15	16	17	18	19	20	21
22	23	24	25	26	27	28
29	30	31				

February

S	M	T	W	T	F	S
	1	2	3	4	5	6
7	8	9	10	11	12	13
14	15	16	17	18	19	20
21	22	23	24	25	26	27
28	29	30				

March

S	M	T	W	T	F	S
	1	2	3	4	5	6
7	8	9	10	11	12	13
14	15	16	17	18	19	20
21	22	23	24	25	26	27
28	29	30	31			

April

S	M	T	W	T	F	S
	1	2	3	4	5	6
7	8	9	10	11	12	13
14	15	16	17	18	19	20
21	22	23	24	25	26	27
28	29	30				

May

S	M	T	W	T	F	S
1	2	3	4	5	6	7
8	9	10	11	12	13	14
15	16	17	18	19	20	21
22	23	24	25	26	27	28
29	30	31				

June

S	M	T	W	T	F	S
	1	2	3	4	5	6
7	8	9	10	11	12	13
14	15	16	17	18	19	20
21	22	23	24	25	26	27
28	29	30	31			

July

S	M	T	W	T	F	S
	1	2	3	4	5	6
7	8	9	10	11	12	13
14	15	16	17	18	19	20
21	22	23	24	25	26	27
28	29	30	31			

August

S	M	T	W	T	F	S
1	2	3	4	5	6	7
8	9	10	11	12	13	14
15	16	17	18	19	20	21
22	23	24	25	26	27	28
29	30	31				

September

S	M	T	W	T	F	S
1	2	3	4	5	6	7
8	9	10	11	12	13	14
15	16	17	18	19	20	21
22	23	24	25	26	27	28
29	30	31				

October

S	M	T	W	T	F	S
	1	2	3	4	5	6
7	8	9	10	11	12	13
14	15	16	17	18	19	20
21	22	23	24	25	26	27
28	29	30	31			

November

S	M	T	W	T	F	S
1	2	3	4	5	6	7
8	9	10	11	12	13	14
15	16	17	18	19	20	21
22	23	24	25	26	27	28
29	30					

December

S	M	T	W	T	F	S
	1	2	3	4	5	6
7	8	9	10	11	12	13
14	15	16	17	18	19	20
21	22	23	24	25	26	27
28	29	30	31			

Legend:

- Garbage Collection
- Recycling and Garbage Collection
- Recycling Drop Off Event @ Bexley Depot (8am - 3pm)
- Recycling Drop Off Event @ Botany Depot (8am - 3pm)
- ☐ Your scheduled Clean Up dates:

Monday 9 January
Monday 17 April
Monday 10 July
Tuesday 3 October

Please see back for more details

UNIT / APARTMENT
W 21 M-MON-B

1300 581 299
bayside.nsw.gov.au

Scheduled Clean Up

entitled to 4 scheduled clean ups per year of <3 cubic metres and neatly in front of your house (at specific unit blocks), within 48 hours prior to your collection date.

ACCEPTABLE MATERIAL

- Household items/furniture
- mattresses
- white (bundled/tied/bagged)
- boards of carpet
- fridges (remove nails)
- move locks and hinges
- gods (detach doors)

REJECTABLE MATERIAL

- or mirrors
- green waste
- ties or fire extinguishers
- chemicals or paint
- is, items (2-person lift)
- al and commercial waste
- ste
- B >30cm wide or >1m long
- is or sand
- is or insulation
- on material

3m

3m

Refer to Council's Bayside Council Waste App Customer Service Centre to arrange paid on-call other time.

Collection officers are on hand. Please apply, app or 1800 581 299.

Community Recycling Drop Off Events

In 2023, Bayside Council has 22 Annual Community Recycling Drop Off Events. All recyclable items are separated and collected by appropriate recyclers.

Please make sure to **provide evidence** that you live within Bayside Council. There is a limit of **3 cubic metres** (box trailer size) per resident for each event.

Time from 8:00am to 3:00pm on nominated Saturdays at nominated locations:

- Bexley Depot 10-14 Rye Avenue
- Botany Depot Cnr Pemberton & Clevedon Sts

ACCEPTABLE MATERIAL

- Metals/Whitegoods
- Empty PET bottles (max 2)
- Electronic waste
- ink toner cartridges
- Green waste
- X-ray films
- Mattresses (max 2)
- Expanded polystyrene
- Car tyres (max 2)
- Motor oils (<10L)
- Flattened cardboard
- Alkaline and car batteries
- Clothing (reusable)
- Fluorescent light globes
- Plastic pots (PPS)
- Plastic toys
- Writing instruments

NO OTHER WASTE IS ACCEPTED!

Download the Bayside Waste Services App

NEVER MISS ANOTHER COLLECTION DAY

Clean Up Service

RULES

DO NOT PRESENT earlier than Saturday or later than Sunday before your scheduled collection dates or the day before a paid additional clean up service. It will be treated as illegally dumped material.

3 CUBIC METRES PER HOUSEHOLD (one box trailer load) **only** will be collected. Any extra waste may be deemed as over-presentation, you will have 48 hours to arrange for its removal. If not removed, it will be treated as illegally dumped material and may incur a fine.

NEAT AND CORRECT PLACEMENT of waste may be enforced. Place waste neatly on outer edge of nature strip in front of your property or in the bulky waste room/space available in your multi-unit complex.

DO NOT PLACE material in rear lane ways, in gutters or garden islands. Otherwise, it will be treated as illegally dumped material and may incur a fine.

DO NOT BLOCK pedestrian or vehicular access.

BAG OR BOX all loose and small waste to prevent the potential for wind-blown littering.

BAG, BOX OR TIE green waste and remove spiky thorns.

SEPARATE PILES including mattresses, white goods, metals, e-waste to assist with a more efficient collection service.

LARGE MULTI-UNIT BLOCKS may have a different presentation area on site. Please refer to your building manager for details.

Example of placement of materials on nature strip.



Strategy

Garbage &
Organics

Recycling

Green
Waste

Clean Up

Community
Drop Offs

Other
Initiatives

Scheduled Clean Up

You are entitled to **4 scheduled clean ups** throughout the year of ≤ 3 cubic metres to be placed neatly in front of your home or on-site (at specific unit blocks), no earlier than 48 hours prior or up to your specified collection date.

ACCEPTABLE MATERIAL

- ✓ E-Waste that **does not contain batteries**
- ✓ General household items/ furniture
- ✓ Two (2) mattresses
- ✓ Green waste: bundled/tied/ bagged
- ✓ Small amounts of carpet
- ✓ Fence palings: remove nails
- ✓ Doors: remove locks and hinges
- ✓ Whitegoods: detach doors



NON-ACCEPTABLE MATERIAL

- ✗ No glass or mirrors
- ✗ No fibro or asbestos
- ✗ No spiky green waste
- ✗ No gas bottles or fire extinguishers
- ✗ No liquids, chemicals or paint
- ✗ No batteries
- ✗ No heavy items (2 person lift)
- ✗ No industrial and commercial waste
- ✗ No food waste
- ✗ No branches >30cm wide or >1m long
- ✗ No sawdust, soil or sand
- ✗ No fibreglass or insulation
- ✗ No demolition material
- ✗ No car parts
- ✗ No tyres
- ✗ No material placed out after the street has been cleared.

For more information refer to Council's website or the Bayside Council Waste App or call Council's Customer Service on 1300 581 299 to arrange paid additional clean up service collections at any other time.

Council waste regulation officers are on patrol for illegal dumpers. Fines apply. If you witness illegal dumping contact Council via the Waste App or call 1300 581 299.

Community Drop Offs

Council currently holds 22 events per year for Bayside residents and accept a wide range of recyclable material. Refer to your Council calendar, Waste App or website for details.

ITEMS ACCEPTED

- ✓ Metals/Whitegoods: items from households that cannot be reused
- ✓ Electronic waste: any battery operated and electronic items (anything with a power cable)
- ✓ Green waste: branches must be bundled and tied, no thicker than 30cm and no longer than 1m
- ✓ Mattresses (max 2)
- ✓ Empty LPG bottles (max 2)
- ✓ Ink toner cartridges
- ✓ X-ray films
- ✓ Expanded polystyrene
- ✓ Car tyres (max 2)
- ✓ Motor oils (<10L)
- ✓ Flattened cardboard
- ✓ All batteries
- ✓ Clothing (re-usable)
- ✓ Fluorescent light globes
- ✓ Writing instruments
- ✓ Plastic pots
- ✓ Bicycles and scooters

Please make sure to provide evidence that you live within Bayside Council.

There is a limit of 3 cubic metres or a box trailer equivalent per resident for each event.

ITEMS NOT ACCEPTED

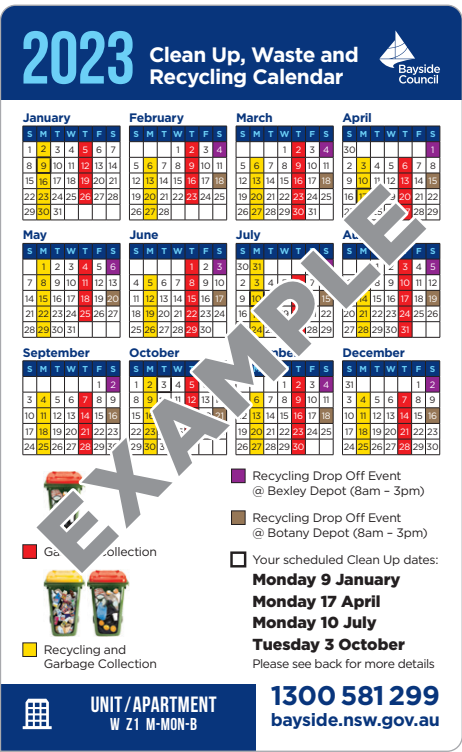
- ✗ BBQs
- ✗ Smoke detectors
- ✗ X-ray machines
- ✗ Chemical and hazardous waste including paint
- ✗ Fuel
- ✗ General rubbish



Recycling Drop Offs

All residents received a 2023 Recycling Calendar in the mail.

If you have not received one, please contact Council's Customer Service on 1300 581 299. This information is also available on the Bayside Waste Services App and on Council's website.



Example
of a 2023
Recycling
Calendar.

BEXLEY DEPOT

**10-14 Rye Avenue
Bexley
8:00am – 3:00pm**

Saturday 1 July 2023
Saturday 5 August 2023
Saturday 2 September 2023
Saturday 7 October 2023
Saturday 4 November 2023
Saturday 2 December 2023
Saturday 3 February 2024
Saturday 2 March 2024
Saturday 6 April 2024
Saturday 4 May 2024
Saturday 1 June 2024

BOTANY DEPOT

**Corner Pemberton and
Clevedon Streets
Botany
8:00am – 3:00pm**

Saturday 15 July 2023
Saturday 19 August 2023
Saturday 16 September 2023
Saturday 21 October 2023
Saturday 18 November 2023
Saturday 16 December 2023
Saturday 17 February 2024
Saturday 16 March 2024
Saturday 20 April 2024
Saturday 18 May 2024
Saturday 15 June 2024

Household Chemical

NSW EPA DROP OFF SERVICES

It can be dangerous to throw away household chemicals in your garbage bin, down drains, toilets or sinks.

Chemicals and pesticides can harm our environment and our health. It is important to make sure that household chemicals are disposed of safely.

Clean out your household's chemical clutter the right way. The safest way to dispose of potentially hazardous household chemicals is the Household Chemical CleanOut.

It is a **FREE SERVICE** for the safe disposal of a range of common household chemicals, many of which could cause harm if not disposed of correctly.

The NSW EPA conducts monthly drop offs for unwanted chemicals you have around the house. You can deliver up to 20kg or 20L of materials which may include solvents, fluorescent globes/tubes, car batteries, motor oils, paint, gas bottles, fire extinguishers, and pool chemicals.

To find out about this free service, please call 131 555 or visit www.cleanout.com.au



Household
Chemical CleanOut



Community
Recycling Centres



Strategy

Garbage &
Organics

Recycling

Green
Waste

Clean Up

Community
Drop Offs

Other
Initiatives

Medical Sharps

Council has a **FREE DISPOSAL** program. Please ensure that all sharps are secured in an appropriate sharps bin container.

ARNCLIFFE

Athelstane Pharmacy, 93 Wollongong Road	9567 1534
Arncliffe Station Pharmacy, 17 Firth Street	9567 1554
Nile Compounding Pharmacy, 5 Firth Street	9597 5990

BANKSIA

Banksia Pharmacy, 25 Railway Street	9567 1470
-------------------------------------	-----------

BARDWELL PARK

Bardwell Park Pharmacy, 12 Hartill-Law Avenue	9567 1978
---	-----------

BEXLEY

St George Pharmacy Plus, 481 Forest Road	9567 3033
--	-----------

BEXLEY NORTH

McFarland's Pharmacy, 19 Shaw Street	9150 5560
Organic Pharmacy, 299 Bexley Road, Bexley North	9150 5541

BOTANY

Chemist Warehouse, 1124 Botany Road	9316 8625
Kennedy's Pharmacy, 1417 Botany Road	9316 6086

CARLTON

Davenport Pharmacy, 36 Carlton Parade	9587 5515
---------------------------------------	-----------

EASTGARDENS

Priceline Pharmacy (Westfield), 152 Bunnerong Road	9349 7700
--	-----------

EASTLAKES

Eastlakes Discount Drug Store, 30 Evans Avenue	9667 1197
--	-----------

KINGSGROVE

Blue Cross Pharmacy, 3/322 Kingsgrove Road	9554 9002
Gerakaris Pharmacy, 278-280 Kingsgrove Road	9150 9553

KOGARAH

Zainab's Pharmacy, 1 Queen Victoria Street	9587 5814
--	-----------

MASCOT

Cincotta Discount Chemist, 944-946 Botany Road	9667 4183
--	-----------

RAMSGATE

Day & Night Chemist, 328 Rocky Point Road	9529 6399
Eddies Pharmacy, 211B Ramsgate Road	9529 3367
The Centre Pharmacy, 183A Ramsgate Road	9529 8728

ROCKDALE

Alderson's Pharmacy, 496 Princes Highway	9567 2632
Rockdale Compounding Pharmacy, 487 Princes Highway	9567 3404
Rockdale Pharmacy, 88 Railway Street, Rockdale	9599 3332

ROSEBERY

Rosebery Pharmacy, 387 Gardners Road	9667 1102
--------------------------------------	-----------

SANS SOUCI

Centre Pharmacy, 183A Ramsgate Road	9529 8728
Dolls Point Pharmacy, 6/524-544 Rocky Point Road	9529 8696

WOLLI CREEK

Discover Pharmacy, Suite 7/6 Discovery Point Place	8068 9493
--	-----------

Container Deposit

Did You Know... You can make money from beverage containers? Most 150ml to 3-litre beverage containers are eligible for a 10-cent refund provided they are made from glass, plastic, aluminium, steel or liquid paperboard.

CONTAINERS NEED TO:

- ✓ Be empty.
- ✓ Be uncrushed.
- ✓ Be unbroken.
- ✓ Have the original label intact.



CONTAINERS NOT ELIGIBLE for a 10-cent refund include:

- ✗ Plain milk (or milk substitutes).
- ✗ 1 litre or more of: flavoured milk, pure juice, wine and water casks.
- ✗ Wine and spirits in glass containers.
- ✗ Wine sachets of 250 millilitres or more.
- ✗ Cordials and concentrated fruit/vegetable juices.
- ✗ Registered health tonics.



NEAREST RETURN POINTS

Take your empty containers to a collection point. An interactive map is available online at www.returnandearn.org.au so you can identify the ones nearest to you.

Clothing Recycling

Council will accept your clothing at the community recycling drop off events at Council's Bexley and Botany depots. These items will be re-used or recycled.

These drop off event dates are also available on the Bayside Waste Services App, on Council's website or on 1300 581 299.

Alternatively, you can donate them at your nearest clothing bin or Op Shop.



BEXLEY DEPOT

**10-14 Rye Avenue
Bexley
8:00am – 3:00pm**

Saturday 1 July 2023
Saturday 5 August 2023
Saturday 2 September 2023
Saturday 7 October 2023
Saturday 4 November 2023
Saturday 2 December 2023
Saturday 3 February 2024
Saturday 2 March 2024
Saturday 6 April 2024
Saturday 4 May 2024
Saturday 1 June 2024

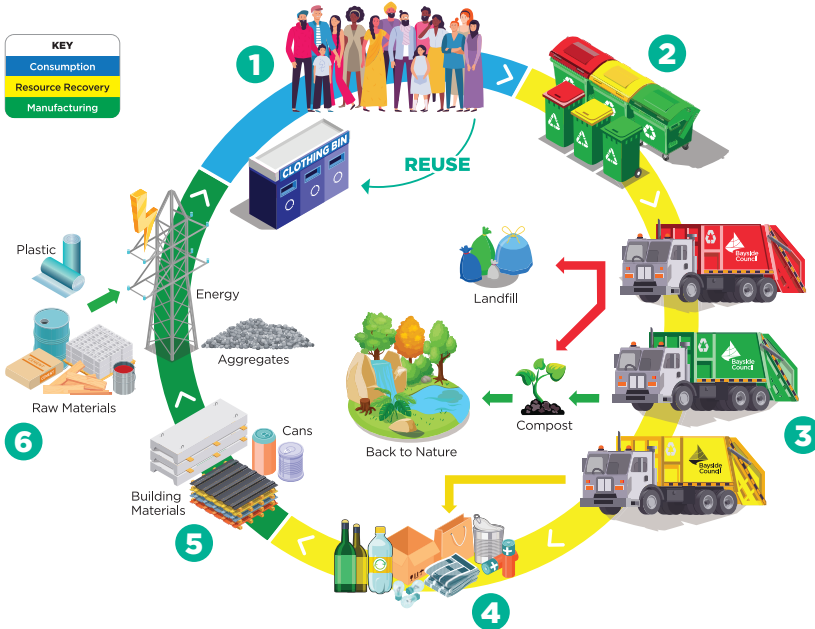
BOTANY DEPOT

**Corner Pemberton and
Clevedon Streets, Botany
8:00am – 3:00pm**

Saturday 15 July 2023
Saturday 19 August 2023
Saturday 16 September 2023
Saturday 21 October 2023
Saturday 18 November 2023
Saturday 16 December 2023
Saturday 17 February 2024
Saturday 16 March 2024
Saturday 20 April 2024
Saturday 18 May 2024
Saturday 15 June 2024

Bayside's Sustainable Circular Economy

Each year, Council manages approximately 80,000 tonnes of different waste and recycling streams. The NSW State Government target is to have an 80% average recovery rate by 2030.



1. WASTE GENERATION

Waste generated from households and businesses with a Council service.

2. WASTE SEPARATION

Waste generated is separated into different waste and recycling streams.

3. WASTE COLLECTION

Waste and recycling stream are collected.

4. SORT

Recyclables and organics are separated.

5. RECOVERY

Recovered materials are sorted for re-manufacturing.

6. DESIGN AND PRODUCTION

New products are created from recycled and new materials.

Strategy

Garbage & Organics

Recycling

Green Waste

Clean Up

Community Drop Offs

Other Initiatives

Close the Loop

RE-HOMING DONATED ITEMS

Bayside Council has an agreement with the Bower Reuse & Repairs Centres.

You can donate household goods to the Bower, which will either be resold to the community at a low cost, or they will be received by people in need via their 'house to home program'. Please check their web page to find out about the acceptable material.

If they cannot accept or accommodate your donations you can check their reuse database for alternate options.

<https://bower.org.au/collections>



The Bower's in-house repairers have been repairing electronic appliances and furniture for 10 years and want to share their expertise with the community.

You can also attend or participate in the repair workshops (no prior skills are required as experienced facilitators will guide you through) or use their repair services, with details located on their website.



Waste Programs

ILLEGAL DUMPING & LITTERING

To report litter or an illegal dumping please contact Council's Customer Service Centres on 1300 581 299 or report it direct on the Bayside Waste Services App.

Council was recently awarded grant funding by the NSW Government to target and reduce illegal dumping through the use of mobile CCTV trailers in illegal dumping hotspot locations. The trailers are complemented by an illegal dumping awareness program (see below). Council continues to have an ongoing agreement with the Sydney Regional Illegal Dumping (RID) Squad to investigate and prosecute offenders.

If you spot a dumper, take details and call immediately 131 555. Fines start from \$2,000.

**SOLAR POWERED
CAMERAS IN USE***





*Council utilises many solar powered cameras throughout Bayside to help identify illegal dumping and prosecute offenders. Fines start from \$2,000. Please dispose of waste correctly by contacting Council on **1300 581 299**.

DON'T BE A TOSSER!

If it's not in the bin, it's on you.

AWARENESS PROGRAMS

Many 'known hotspot' areas were targeted in 2022-23 in order to reduce the incidence of illegal dumping. These programs were conducted in alliance with RID with outstanding results.

The program included mail box drops, community engagement, signage, regular patrols, and solar powered surveillance cameras.

The awareness program will continue in 2023-24.

A 2016 survey of NSW local councils, public and private land managers and community groups found that more than **\$180 MILLION** is spent each year on managing litter.

Bayside Council provides over **750 PUBLIC BINS** in high traffic areas. Fines start from \$250 for general littering.



Strategy

Garbage &
Organics

Recycling

Green
Waste

Clean Up

Community
Drop Offs

Other
Initiatives

Paid Additional Clean-Up

To arrange a paid additional clean-up service please call Council's Customer Service Centre on 1300 581 299. Please specify the amount and type of waste to be presented and a Customer Service Officer will arrange a mutually suitable booking time for collection.

Please contact Council by Thursday 12pm (noon) to arrange a paid collection service on a particular Friday that is amicably suitable.

Fees for 2023-24 are:

- ▶ 1 cubic metre (1m x 1m x 1m) = \$85.50
- ▶ 3 cubic metres (3m x 1m x 1m) = \$164.50
- ▶ 6 cubic metres (6m x 1m x 1m) = \$252.60



COMPLIANCE

- ▶ **DO NOT PRESENT** earlier than the day before collection. Otherwise, it will be treated as illegally dumped material. Penalties may apply.
- ▶ **NEAT AND CORRECT PLACEMENT** of waste may be enforced. Place waste neatly on outer edge of nature strip in front of your property.
- ▶ **DO NOT PLACE** material in rear lane ways, in gutters or garden islands.
- ▶ **DO NOT BLOCK** pedestrian/vehicular access. Penalties apply.
- ▶ **BAG OR BOX** all loose and small waste to prevent the potential for wind-blown littering.
- ▶ **BAG, BOX OR TIE** green waste and remove any spiky thorns.

Paid Additional Clean-Up

RESIDENTS PAID DROP OFF AT BINGO FACILITIES

In September 2020, Council entered into a contract with BINGO Waste Services, allowing residents to drop off specific general household waste material at any of their Sydney wide locations at a reduced rate.

A photo ID and copy of residency is mandatory.

A minimum fee of \$100 applies for up to 286kg of material, and 35 cents per kilo thereafter (prices until 30 June 2024).



OPENING HOURS

Alexandria: 76 Burrows Road

Monday to Friday 6am to 10pm
Saturday 7am to 1pm

Mortdale: 20 Hearne Street

Monday to Friday 6:30am to 4pm
Saturday 7:30am to 1pm

BINGO
INDUSTRIES

Waste Education

SCHOOLS PROGRAM

In 2023 Bayside Council worked with Keep Australia Beautiful of NSW to deliver the Waste Education in Schools program, with the aim of teaching young students how to protect our environment through recycling and other sustainable practices.

A total of 4,581 students participated in numerous modules from 15 schools, over 38 days, raising awareness of the impacts of litter and waste related solutions.

We are looking forward to continuing our Waste Education in Schools program again in 2024.



COMMUNITY EDUCATION INITIATIVES

Each year Bayside Council promotes waste and recycling education at different community events, fairs and information sessions.

This may include new and innovative trials, community gardens, composting and worm farms, volunteer clean up events and facility tours.

Staff look forward to seeing you at the next event!

NEVER MISS ANOTHER COLLECTION DAY

DOWNLOAD THE BAYSIDE WASTE SERVICES APP



Available on the
App Store



ANDROID APP ON
Google play



NSW EPA *Waste Less, Recycle More*
initiative funded from the waste levy



This document is only for properties in:
Arncliffe, Banksia, Bardwell Park, Bardwell Valley
Bexley, Bexley North, Brighton Le Sands, Carlton
Dolls Point, Kingsgrove, Kogarah, Kyeemagh
Monterey, Ramsgate, Ramsgate Beach, Rockdale
Sandringham, Sans Souci, Turrella and Wolli Creek



www.bayside.nsw.gov.au

Bayside Customer Service Centres:

Rockdale Library, 444-446 Princes Highway, Rockdale
Westfield Eastgardens, 152 Bunnerong Road, Eastgardens

Phone **1300 581 299 | 9562 1666**

