



Public Artwork

Town Park at 4 Guess Avenue, Wolli Creek

CALL FOR EXPRESSIONS OF INTEREST (EOI) FROM FIRST NATIONS ARTISTS

Project No: F23/100

Applications Open: 19 June 2023

Satge One Applications Close: 31 July 2023

1 The Project

1.1 Project Overview

Bayside Council is seeking suitably experienced First Nations public artists /artist- led teams to design and install a large-scale artwork on the existing large white painted wall located on the northern boundary of 4 Guess Avenue, Wolli Creek, to complement a significant new town park currently under construction at this site.

To highlight the significant Aboriginal Heritage of the area and to add to the vibrant visual presence of the new park, the artwork will respond to key themes about the history, geography and/or use of the site. Wolli Creek sits alongside the Cook's River, a waterway with significant importance to the transport, trade and immense changes that our Country has seen. This project looks to bring First Nations' art to the forefront of a site located in the heart of Bayside through a new artwork that explores the River and its importance in this part of Sydney. The themes outlined in this document have arisen from consultation with local Elder, Aunty Barb Simms.

First Nations people used the land around Cooks River for thousands of generations before European settlement. Over this vast amount of time the river changed its course with sea level rise and changing tidal reaches, influencing Aboriginal uses across the stretch of the river. The river was utilised for trade between inland people, fishing, and gathering shellfish. It is understood that four different clans inhabited the area surrounding the river, including the Darug, Bidjigal, Gameygal and Cadigal people.

The artwork could be a painted mural and/or sculptural in form fabricated from metal. It would need to suit the scale of the wall and fit within the proposed use of the park and the themes (outlined below). Please keep in mind that it is not envisaged that the artwork will cover the whole of the existing white painted wall. The wall measures approximately 9 metres high by 36 metres long, with an area of 327m². A survey of the wall has been undertaken to show detailed measurements of the wall sections.

1.2 Project Background

Construction of a new town park at 4 Guess Avenue is well underway. The park is sited not far from Cooks River, where there is documented evidence of Aboriginal occupation for at least 10,000 years.

The park design features a multi-purpose playing court, ping pong table, fitness equipment, and seating areas bounded by a prominent painted concrete wall.

The artwork wall forms a solid barrier to an underground carpark and podium level private rooftop open space to high rise units. It is lightly dissected by some linework resulting from the wall construction that may influence the design of the mural.

This wall is a strong feature of the space and has been identified as a prime opportunity to install an artwork to reflect the area, surroundings, and contemporary context of the new park setting.

In addition to the multi-purpose courts, the park features the following elements:

- Grassed open space for picnicking and play
- Variety of shaded play spaces
- Range of seating and a picnic shelter
- New tree and mass plantings for shade and habitat
- Pedestrian lighting through the park

Soft landscape works – mass plantings of shrubs and groundcovers – will be planted between the multi court and wall associated with a drainage swale. Trees originally

planned to be included within this area have been deleted from the project, so that views of the wall artwork will be maintained.

Park construction works are due to be completed by September 2023. The artwork would ideally be undertaken while the park is being constructed, at an appropriate construction stage that allows access and before final soft landscape works are undertaken by the contractor. However this may not be feasible given the time constraints for selecting an artist/ artist-led-team and park project construction deadlines.

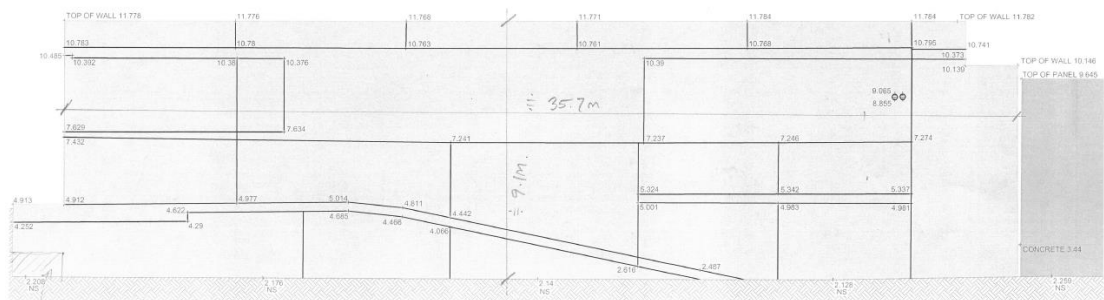
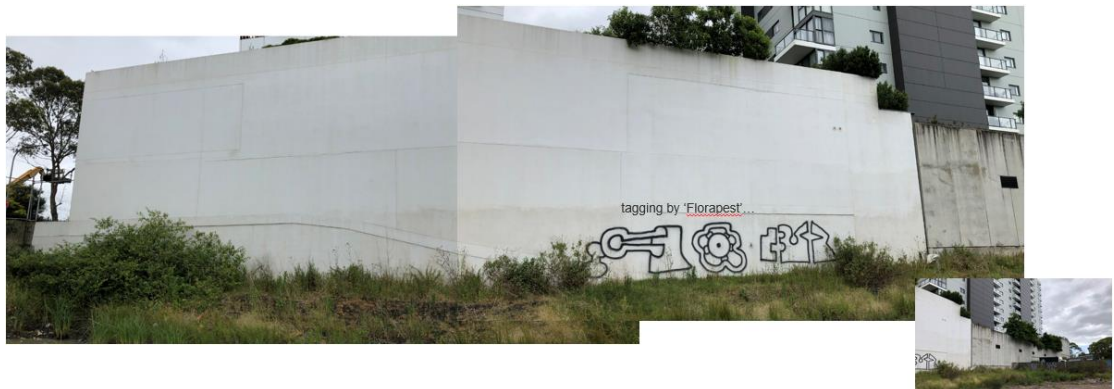
Indicative Timeline

19 June	– Applications open
31 July	– Round one applications due
7 August	– up to 3 artists selected to submit designs
21 August	– Round 2 designs due
28 August	– successful Artist/ artist-led team selected and notified
18 September	– Artist/ Artist-led team begins installation of artwork on site.

Park Montage



The Wall



Wall survey: Measures approx. 9m high by 36m long. Area approx. 327m²

Site Context/ Location



Image 1. Site Location – context with Cooks River and Wolli Creek.



Image 2 – Site Location within Wolli Creek (suburb)

Artwork Size

The size of the artwork is to suit the scale of the “canvas” of the existing painted white wall and open space being created.

It is not envisaged that the artwork would cover the whole of the existing white painted wall, which measures approximately 9 metres high by 36 metres long, with an area of 327m². A survey of the wall has been undertaken. Refer to surveyed wall drawing, Appendix X

The successful artist/ artist-led team will work within the available budget to create and install a large scale 2D painted and/or sculptural artwork on the Wall.

1.3 Themes – The River

For this project, Bayside Council has consulted with local Elder, Aunty Barb Simms. Aunty Barb has provided important stories, insights and knowledge about the ecosystem near the new park and proposed artwork wall. The points below were told to Bayside Council staff at the River's edge. The River is an ecosystem that is an integral part of all life. It is important to slow-down, scan the environment as there are many things that the river provides and can show us.

For your submission, please factor in the below points of local knowledge and consider how your artwork will explore one or more of the points outlined below.

The River Provides

- The river is the local supermarket, chemist, tool shop
- Midden sites are numerous along the river
- Mangroves are Men's Business.
- Tides provide “window shopping” opportunities. 0.1-0m tide is best for gathering/ fishing
- Food; Oysters (bidhiinja), mud crabs, abalone, Octopus (djunga), Eel (bara), leather jackets
- Tools; Boomerangs made from ‘bent knee’ & ‘bent elbow’ branches, strong branches where wet wood is dried, stripped and shellacked, cutting tools can be made from oysters
- Adornments – shells used for shell-work and jewellery.
- Mangrove seeds (billy bungs) float across the river and establish great distances away

The River Transports

- The Bayside area is a migration hub and cultural exchange
- Stringybark Canoes have been used in these rivers for transport
- The waterways are key connections for trade, communication and gathering
- Today- trains, cars, planes, and boats all move people to and through these lands, skies, and waters
- Gurrawallawaylia (whale migration)
- Munjib (facial expression)– “where are you going”

The River is Time

- The tides mark the movement of time, where the past, present and future exist as one
- Provides a space to contemplate your surroundings and scan your environment.
- Represents evolution; change- hope- frustration.
- When the water is still, it is called a “milk pond”

1.4 Artist selection process

STAGE ONE: Expression of Interest – DUE DATE - Monday 31 July

Suitably qualified First Nations artists are invited to submit an Expression of Interest (EOI). All submissions will be assessed against the EOI criteria and a list of suitable artists then selected for the next stage of design and final judging.

Each EOI is to;

1. Be submitted prior to the EOI deadline
2. Provide examples of any previous large-scale artworks completed (maximum 10 images)
3. Provide an artist CV that outlines experience that meets the demands of this future project
4. Provide two referee contacts
5. Include evidence of Insurances that include; Public Liability \$20M, Professional Indemnity \$10M
6. Include a short written Concept Statement outlining vision, intent, and inspiration that responds to the theme: The River, this could include rough sketches (digital or drawn) of the sorts of ideas proposed. It is recommended that artists visit the site in person to familiarise yourself with the area.
7. Include a brief statement of your knowledge of the local area and any connection to the local communities. It is not expected that artists are from the local area, local Elders have requested that the successful artist have an awareness of the area and appreciation for the communities of this place.

How this stage will be judged

The qualitative evaluation criteria to measure key deliverables are:

1. The Artist's demonstrated understanding of the discipline of Public Art and the requirements of creating artworks for the public domain
2. The Artist's demonstration of creativity and artistic merit
3. The Artist's professional experience including exhibition record and public and private commissions

STAGE TWO: Limited Artistic Design Competition – DUE DATE – 21 August 2023

Assessment Panel

An assessment panel will review all submissions and recommend up to 3 selected artists develop their ideas further into a final digital design Concept and a written conceptual rationale that provides context to their design proposal.

Each selected artist will be paid a fee of \$3000 for this in keeping with the National Association for the Visual Arts recommended artist fees.

Each artist will need to provide visual representations such as sketches / impressions illustrating the proposed artwork design with scale and perspective indicated.

A deadline for these designs will be sent to finalists after being notified of their selection for Stage Two.

The Artist Assessment Panel will assess the concept submissions and then recommend one artist/ artist-led-team be commissioned to undertake the selected Concept artwork.

Assessment panel makeup

Note that the Assessment panel would comprise the following people:

- Relevant Bayside Council Staff
- Local Aboriginal Elders

Judging Selection Criteria for Stage Two

1. Artistic Response:

The Artist's proposal reflects artistic excellence, innovation, and originality in response to the project theme: The River.

2. Suitability of Project:

The Artist's proposal is judged to be appropriate to the goals of the project. Artist response to the site and theme.

3. Site Responsiveness:

Response to the project, conditions and location of the site.

4. Project Management:

- Inclusion of detailed indicative budget breakdown
- Inclusion and merit of an indicative program of works
- Ability to manage sub-contractors
- Demonstrated ability to deliver an end-to-end project

2 Budget

Concept design fees.

Up to 3 artists will be selected to develop their Concept based on their preliminary submission and review by the Assessment panel. Each artist will be paid \$3,000 ex GST.

Project Budget

A budget of up to \$75,000 has been set for the final design and installation of this artwork.

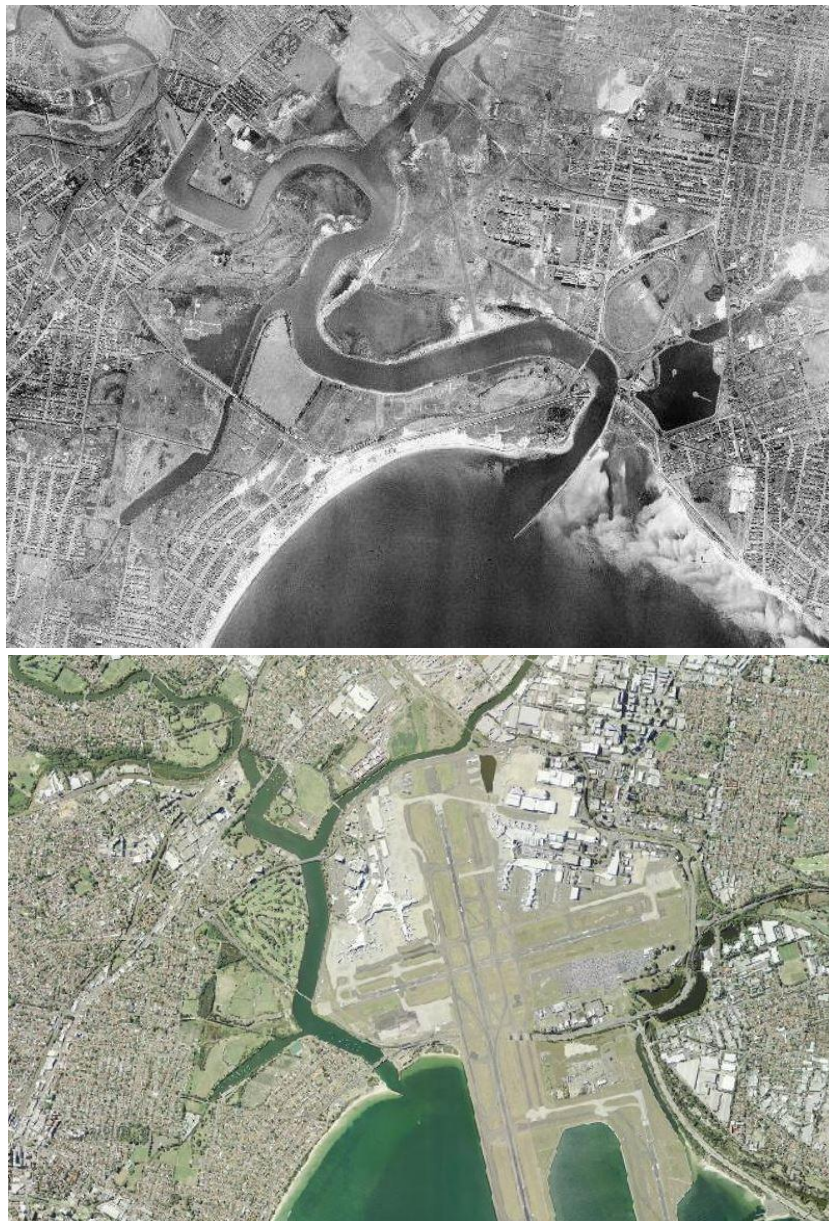
This is to include all costs associated with the design and documentation of the final public artwork, including painting fabrication, and installation works.

Implementation

During the Implementation Stage, the artist will work in consultation / collaboration with Council to:

1. Design and install an artwork detailed to suit the physical proportions and dimensions of the selected wall.
2. Develop shop drawings for any fabricated components of the artwork, to be signed off by Council.
3. At the completion of the project, the artist will be responsible for removal of all equipment and artwork materials, and to leave the site in a clean condition.

Reference Images – The River



Satellite images of the Cooks River in 1943 and today.



Cooks River viewed from Cahill Park