

2. THE SUBURB OF BOTANY



Botany suburb ([2] on the image above) extends from Southern Cross Drive in the north to the shores of Botany Bay in the south, and from the Kingsford Smith Airport in the west to the Sydenham-Botany Goods Line/Stephen Road to the east. Within its boundaries are a wide variety of residential and commercial buildings, as well as part of the Botany wetlands/Mill Pond site, Sir Joseph Banks Foreshore and an industrial precinct.

The first alienation of the land by European settlers was made to the north-west of the area now known as the suburb of Botany. These included Edward Redmond's 'Mudbank' in 1809 (135 acres), Mary Lewin's 30 acres known as 'Newcastle', Andrew Byrne's 30 acre 'Sea View' and the 35 acres to Thomas Walker located closest to the Cooks River. The major landholder in Botany however was Simeon Lord, who first purchased Mudbank and then was given a grant of 600 acres to ensure permanent access to the waters of the Botany Aquifer. Lord dammed the watercourse and created a pond to supply water to firstly a flour mill and then the first factory in the colony to produce woollen cloth, which he sold to the Government.

Lord employed sixty convicts at his Botany site alone (Lord himself was an ex-convict – transported, somewhat ironically, for stealing cloth) and provided cottages and huts for his workforce on the western portion of his holding. After his death in 1840, Lord's sons Edward and George William began to subdivide

the Estate, Edward the western portion near the Cooks River and George the 600 acres of the Botany watercourse.

Booralee was laid out by George Lord as a 'village' set on the shores of Botany Bay. The lots were long and thin and arranged in a grid pattern. Several were sold and groups of cottages and huts built on them which were occupied by fishermen and their families and workers, the area becoming the focus of the local fishing industry until reclamation associated with the airport to the west and wider overfishing in the Bay took their toll.

Other significant uses following the closure of Lord's Mill and factory were the Waterworks and Darvall's Tannery.

The inadequacy of Busby's bore in supplying water to Sydney in the late 1840s led the government to utilise instead Botany's aquifer and freshwater wetlands, swamps and ponds for Sydney's water supply. This was facilitated by the resumption of part of Lord's land to enlarge the main pond and construct a pumping station in 1859 to feed water to Sydney town and the surrounding area. It remained the primary source of Sydney's water until the opening of the Upper Nepean Scheme, finally being decommissioned in 1886.

At this time access to this part of the district was difficult. At least three attempts had been made to build a 'Botany Road' but none actually led to the area now known as Botany. An informal track known as 'Mudbank Road' led to the shore of the Bay well to the west of the wetlands; a formal road built by decree of Governor Macquarie followed an eastern route to skirt the wetlands and meet the bay at the Village of Banks Meadow; and the 'Botany Parish Road' was prevented by the swamps from extending into the area. The only practical route until the 1860s was the deteriorated original Botany Road which followed roughly the course of today's Anzac Parade/Bunnerong Road, although a series of tracks cut across country to the area; or via a track that cut diagonally through the farms north of the watercourse and then crossed Lord's land at its eastern edge and joined the network of tracks from the eastern road. The other option was to travel to Sydney by water around the coast.

Due to much of its land being held by either the Crown or the Lord family, by the 1860s Botany's relative isolation and still sparse settlement meant its roads, public transport and utilities were

deemed to be 'behind' those of Sydney suburbs. Land sales and residential development were therefore slow to take off in Botany, with traditional industries such as fishing and market gardening being the main activities for many years. This isolated quality was however advantageous to one particular industry, that of noxious trades. Tanneries, wool-scours and boiling-down works flocked to Botany after being pushed out of Sydney by the Noxious Trades Act of 1848. Botany was able to satisfy needs for flat, cheap land with the copious water supply and ready drainage that was demanded by these industries. By 1880 there were numerous noxious trades being carried out in Botany, as evidenced in St Matthew's Anglican Church's birth register, a single page of which lists fathers employed as woolwashers, tanners, gardeners, farmers, a boatsman, a toll-gate keeper, a timber merchant and a labourer.

The economy and population provided by the influx of market gardeners and noxious trade workers eventually led to the evolution of Botany from a small village to a town by the 1880s. This was helped by the establishment of two hotels, the Waterworks and the Captain Cook, plus local businesses such as butcher, baker and grocer in close proximity to the main intersection of Botany Road and Bay Street by the 1880s. Later businesses revealed growing affluence, including confectioners, a picture theatre and a billiards saloon, as well as services such as solicitors, hairdressers and dressmakers.

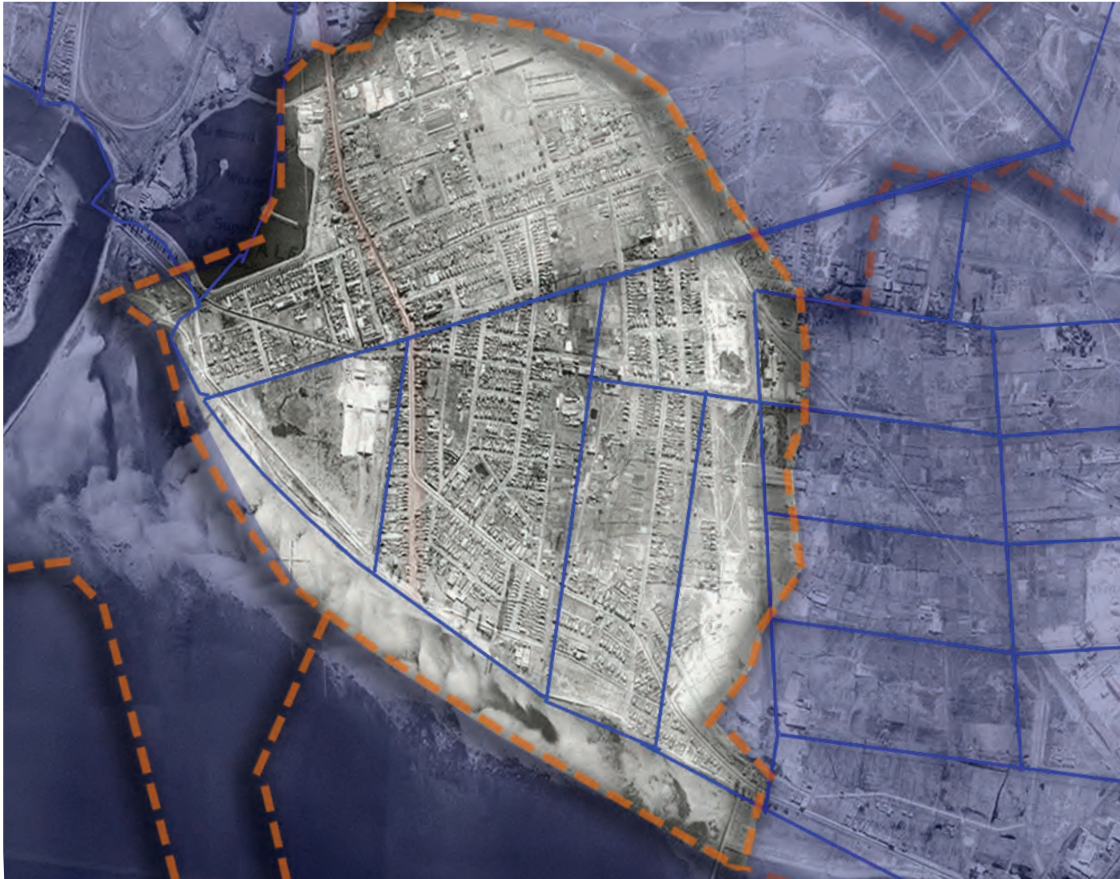
Despite the generally low level of education of the adults in the area, Botany is notable as the location of only the third non-denominational 'National' school in the state, and the first in the Sydney metropolitan area. This school was established in 1848 in temporary premises but closed in 1850. The current school opened in 1862, again in temporary premises (likely the Wesleyan Chapel) and in 1869 moved into the newly completed schoolhouse designed by architect George Alan Mansfield in his characteristic Gothic style.

Simeon Lord had sponsored the erection of the Wesleyan Chapel on his land for his workers and George allocated land for the erection of St Matthews Anglican Church in 1841 (rebuilt in 1862). George also provided the site for the School of Arts and Mechanics Institute, and these facilities provided the nucleus for the growing town which was increasingly less isolated due to better roads and in particular the introduction of the tram service in 1882. By 1888 the area was

Botany, in 1909, showing the boundaries of the original land grants in blue. The original grantee/purchasers were as follows:

- (facing page, top) In 1943
- (facing page, below) In 2014





BOTANY SUBDIVISION PLANS



Overview of the location of the available subdivision plans for the suburb of Botany





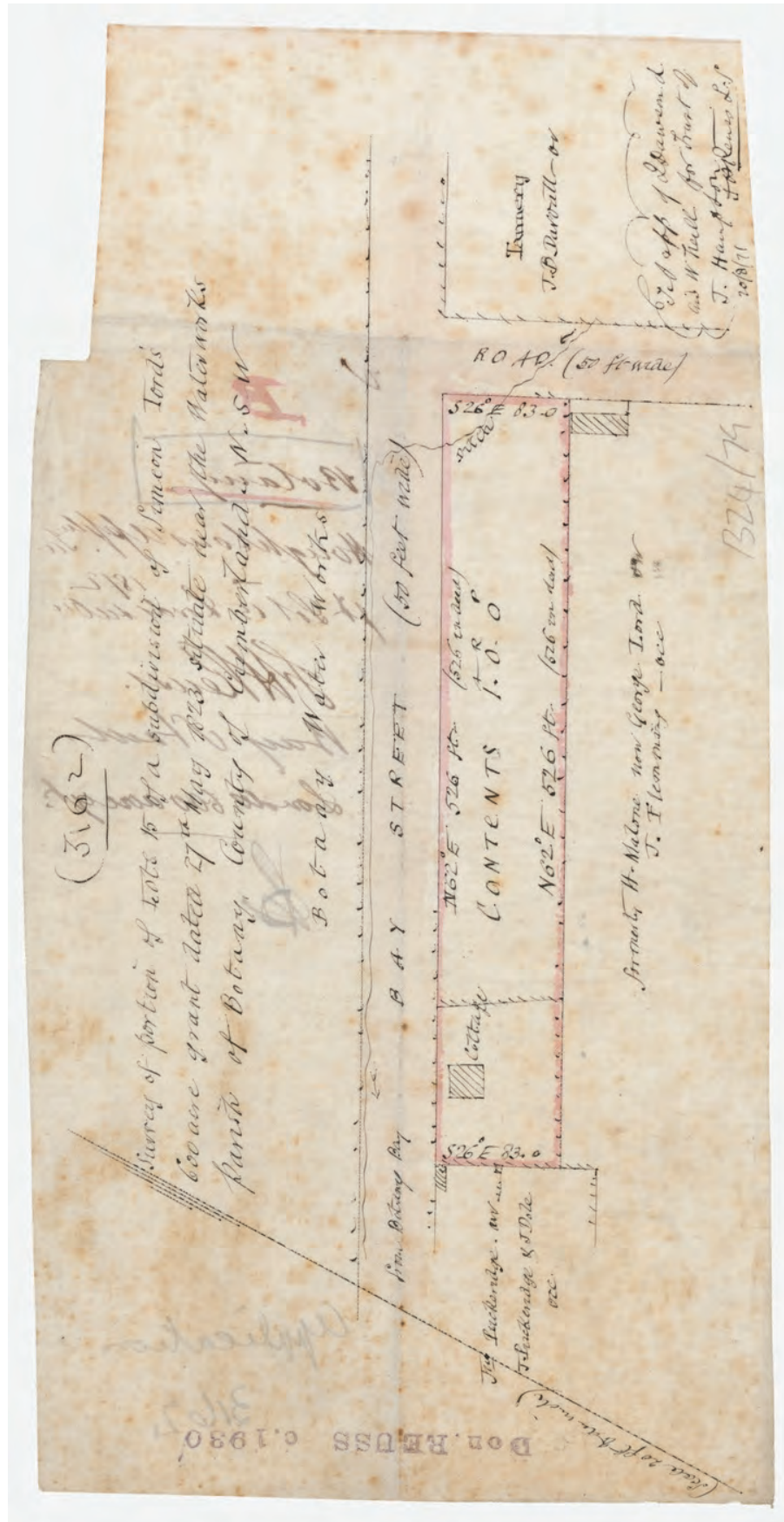
Plan for the first subdivision of Simeon Lord's deceased Estate by his son George Lord. Plan undated, but likely c.1854..





This land, facing Bay Street in Booralee, was part of the original Village of Booralee created by George Lord's first subdivision of Simeon Lord's 600 acres. It is not known if H. Malone was the original purchaser, but by 1858 the land (part of the original Lot 15) was being advertised as part of Malone's Insolvent Estate. The plan for the sale shows the location of a cottage on the site, likely one of the earliest in the village. Unlike most of the early cottages in the district, the advertisement states that the house was "a comfortable brick-built cottage, containing four rooms, &c." (Friday 30 April 1858, New South Wales Government Gazette, p.725). It was located at or close to 15 Bay Street, and is shown on the 1892/1910 Water Board Detail Sheets as "Gemma"; but was demolished after 1943 and the site is now an industrial building.









1886 advertisement for the sale of a large proportion of Lord's estate. It includes the reservation for Booralee Park.

1890 215288 61950

LORD'S ESTATE
1st Subⁿ

BOTANY

For Sale on the Ground
SAT. 29th MAY 1886
at 3.00.

BATT & RODD
by
PURVES

TERMS
£3 per lot Deposit
Balance £1 per Month
Without Interest.

ATCHISON
SCHLEICHER
Civil Engineers & Land Surveyors
Surveyors & Land Surveyors
Every Chambers St. Hill St.

RESERVE FOR PARK

POSTPONED to SATURDAY, JUNE 12

LORD'S ESTATE,
BOTANY TOWNSHIP.

THIS IS THE SALE TO ATTEND
SATURDAY 29th MAY.

Every Lot offered will be sold
WITHOUT RESERVE.

TORRENS' TITLE.
£3 Deposit, and 20s. a Month without interest.

TRAMS pass the Land.
Large Frontages. Great Depths.

249 BLOCKS to Choose from.

IMPERATIVE SALE,
BY ORDER OF
H. E. LORD, Esq., and the Trustees of the
Estate of the late G. LEE LORD, Esq.

GOOD LAND. CHEAP LAND.

BATT, RODD, & PURVES,
AUCTIONEERS.

LORD'S ESTATE,
BOTANY TOWNSHIP.

WORKING MEN and SMALL INVESTORS
SHOULD BEAR IN MIND THE
WONDERFULLY EASY TERMS
ON WHICH
FINE BLOCKS (66 X 240),
FRONTING GOOD STREETS,
MAY BE OBTAINED IN THIS VALUABLE ESTATE, ON
SATURDAY, MAY 29, 1886,
VIZ.
£3 DEPOSIT, and 20s. A MONTH,
WITHOUT INTEREST,
AND
THE TITLE IS TORRENS' ACT,
And that Every Lot Offered will be Sold
Without Reserve.

BATT, RODD & PURVES,
AUCTIONEERS.

LORD'S ESTATE
BOTANY TOWNSHIP.

THIS GRAND PROPERTY OCCUPIES A SPLENDID
POSITION.
Fronting the Main BOTANY ROAD,
CLOSE to the SIR JOSEPH BANKS
HOTEL and BOTANY BAY, where can
be enjoyed the pleasures of
BOATING,
BATHING,
AND FISHING.
OPPOSITE the PUBLIC SCHOOL,
CAPTAIN COOK HOTEL,
Churches, Stores, &c.
With the PUBLIC PARK and SCHOOL
OF ARTS ON THE ESTATE.

SALE:
SATURDAY, MAY 29, 1886,
ON THE GROUND.
TITLE, TORRENS' ACT.

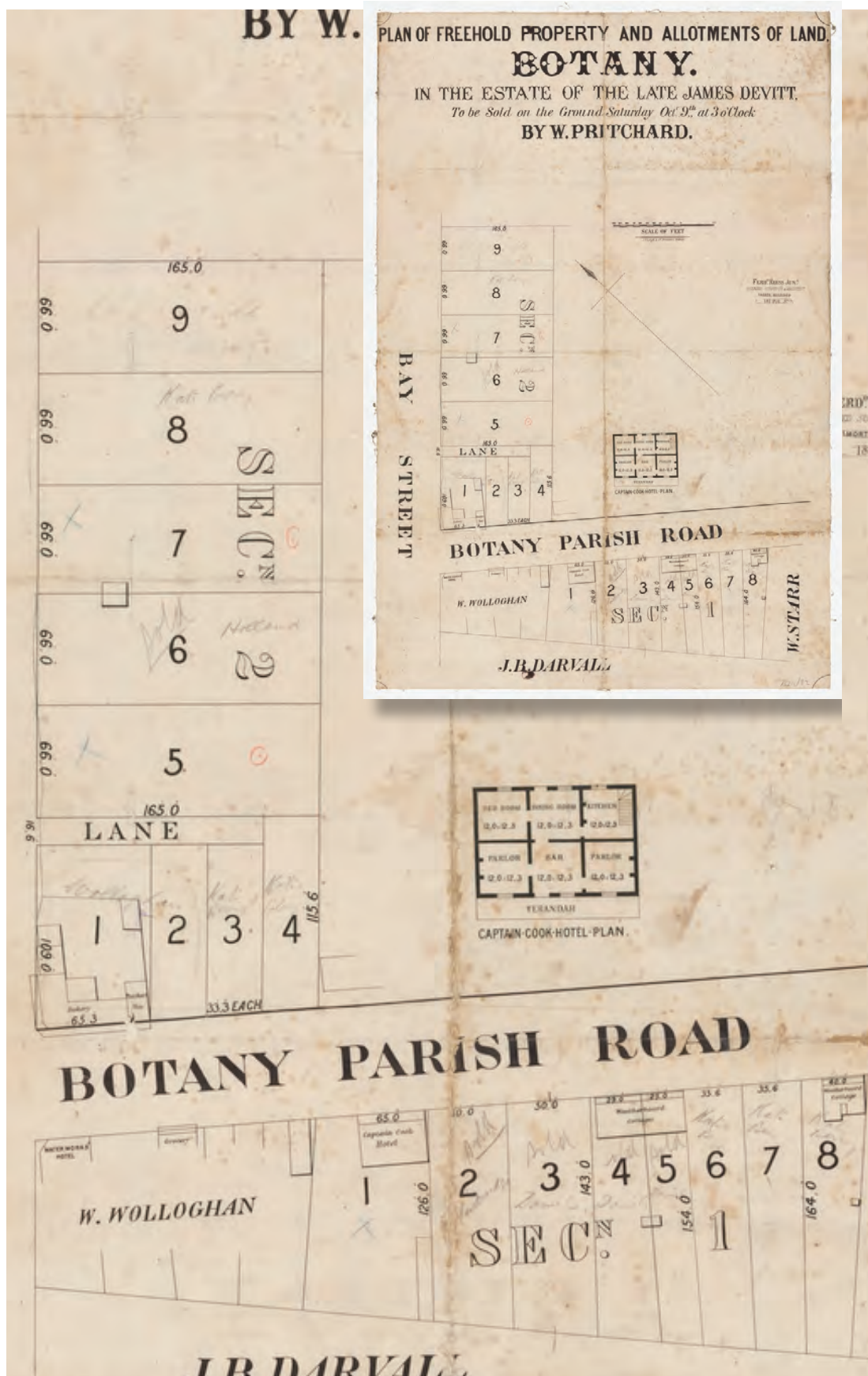
TERMS:
£3 DEPOSIT PER LOT, & 20s. A MONTH,
WITHOUT INTEREST.

BATT, RODD & PURVES,
AUCTIONEERS.



Advertisement for the sale of James Devitt's estate in 1863. This plan has been annotated with the names of purchasers, and also shows the location of the early buildings in the Botany Town Centre. Devitt had been the licensee of the Captain Cook Hotel and the flyer included a plan of the ground floor of the building, revealing its original form.







Advertisement for the sale of the land formerly occupied by tanners Darvall and Castella. The plan includes the footprints of buildings along Botany Road at that time. The site had been offered as a single (or potentially two) lots with the tannery buildings in 1869.

156 VALUABLE BUILDING SITES

Township of **BOTANY**

For auction sale on the Ground on **SATURDAY FEB! 20th 1886**
AT 3 O'CLOCK P.M.

Torrens Title **RICHARDSON & WRENCH**
TERMS LIBERAL!

BAY								S!							
8	7	6	5	4	3	2	1	8	7	6	5	4	3	2	1
9	10	11	12	13	14	15	16	17	18	19	20	21	22	23	24
25	26	27	28	29	30	31	32	33	34	35	36	37	38	39	40
41	42	43	44	45	46	47	48	49	50	51	52	53	54	55	56
57	58	59	60	61	62	63	64	65	66	67	68	69	70	71	72
73	74	75	76	77	78	79	80	81	82	83	84	85	86	87	88
89	90	91	92	93	94	95	96	97	98	99	100	101	102	103	104
105	106	107	108	109	110	111	112	113	114	115	116	117	118	119	120
121	122	123	124	125	126	127	128	129	130	131	132	133	134	135	136
137	138	139	140	141	142	143	144	145	146	147	148	149	150	151	152
153	154	155	156	157	158	159	160	161	162	163	164	165	166	167	168
169	170	171	172	173	174	175	176	177	178	179	180	181	182	183	184
185	186	187	188	189	190	191	192	193	194	195	196	197	198	199	200

BYRNE'S R.D. **UNDERWOOD AVENUE** **BERRY AVENUE** **BOTANY RAILWAY - STATION - 10 - RAILWAY - R.D.**

LANE 20' WIDE

ATCHISON & SCHLEICHER Civil Engineers & Licensed Surveyors
Specially Licensed under the Land Acquisition & Surveying Act
Eldon Ch. 32 Pitt St. Sydney

ROBE, STEWART & CO. SYDNEY



A sketch plan prepared by Surveyor Dick in 1853 showing the early subdivision of Booralee, the Sir Joseph Banks site and the Emu Park.



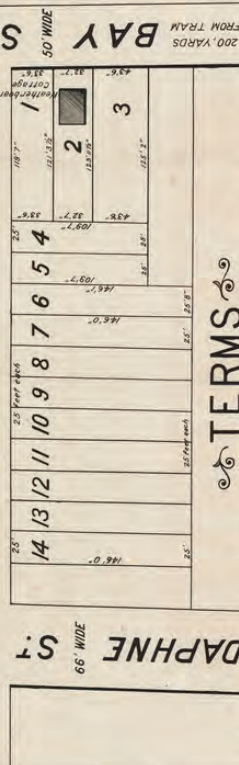
1896 plan for the sale of land opposite Booralee Park. The land was re-advertised in 1902. The plans show the location of a weatherboard cottage on the site.

BY ORDER OF THE MORTGAGEE
14 Choice Building Lots

BOTANY

FOR AUCTION SALE ON THE GROUND
Saturday 5th December 1896 at 330p.m
J. J. Macfadyen AUCTIONEER
BOTANY

DANIELS (66' WIDE) ST



TERMS

25% Deposit, Balance on completion of Title,
or Easy terms can be arranged with vendor.

J. Williamson & Sons
KING ST
Solicitors for the Estate

TORRENS TITLE

J. Weingarth
Licensed Surveyor
TEMPLE COURT, KING ST

N.E.G. Robinson, Lith. Wellington Court, 64 Elizabeth Street

PUBLIC NOTICE.

"TORRENS TITLE."

AUCTION SALE OF DESIRABLE BUILDING SITES AT BOTANY

FACING THE PARK.

Within 200 yards of Tram stopping place, Bay Street; also within 2d. Section of Railway Station.
Land situated at DANIEL & BAY STS. DANIEL ST., 66 ft. wide; BAY ST., 50 ft. wide.

9 Allotments, 25 ft. frontage by 148 ft. Daniel Street
2 Allotments, 25 ft. frontage by 109 ft. Daniel Street
1 Allotment, 40 ft. frontage by 125 ft. Bay Street

The Allotments are situated, free from dust and noise, consequent to the heavy traffic on the main road, also within five minutes' walk of Botany Bay.
An exceptional chance of acquiring fair size blocks of land to build on. Good garden soil, that will grow all vegetables, flowers, &c.
As a speculation for Building purposes, there is none to beat it in the District, being within easy reach of all.

THIS PROPERTY WILL BE SOLD BY

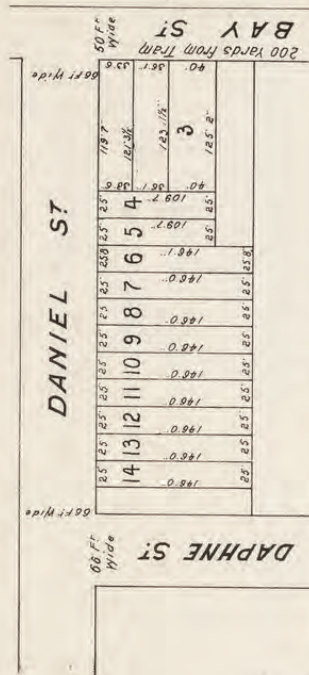
BATT, RODD & PURVES, LTD., AUCTIONEERS, &c., 88 PITT ST.
ON THE GROUND, AT 3 P.M., ON

SATURDAY, 20th day of DECEMBER, 1902.

SO DO NOT MISS THIS CHANCE!

CASH, OR EASY TERMS. TERMS AT SALE BY THE AUCTIONEERS.

Plan of Land for Auction Sale at Daniel and Bay Streets, Botany,



TRAMWAY

BATT, RODD & PURVES, Limited, Auctioneers, &c., 88 Pitt Street.

1324/109

TOWN OF BOTANY

LORD'S ESTATE

MAIN ROAD ALLOTMENTS, AT TOWN HALL.

FOR AUCTION SALE AT THE ROOMS, PITT ST., ON FRIDAY, 22ND SEPTEMBER, 1899, AT 11.30. A.M.

RICHARDSON & WRENCH LTD.

TERMS 1/5 Deposit balance by four annual payments at 5% interest.

TORREN'S TITLE

BANKSIA ST

TO BUNNORONG RD

FROM SYDNEY

BOTANY R^D

66 FEET WIDE

TO BOTANY

F. Cunningham & Co. 110m 45. Pitt St.

1824/99



1907-1917
residue



VALUABLE BUILDING ALLOTMENTS

TOWN of BOTANY

in the immediate vicinity of the **BOTANY TOWN HALL, POST OFFICE, FIRE STATION &c.**

For Auction Sale on the Ground
SATURDAY 25TH MAY · 07 at 3 p.m

RICHARDSON & WRENCH LTD.
 AUCTIONEERS 98 PITT ST

Vendor, Miss Brenda Lee Lord

From Spence
 ELECTRIC
BOTANY ROAD
 TRAM
 To Botany Bay

BAY STREET 50' wide

BANKSIA STREET 55' wide

GEORGE STREET 62' wide

EDWARD STREET 55' wide

POST OFFICE TOWN HALL

FIRE STATION

LANE 20

WIDE

ALLOTMENTS:
 Bay Street: 5, 6, 7, 8
 Banksia Street: 1, 2, 3, 4, 5, 6, 7, 8, 9, 10, 11, 12, 13, 14, 15, 16, 17, 18, 19, 20, 21, 22, 23, 24, 25, 26
 Edward Street: 1, 2, 3, 4, 5, 6, 7, 8, 9, 10, 11, 12, 13, 14, 15, 16, 17, 18, 19, 20, 21, 22, 23, 24, 25, 26, 27, 28, 29, 30, 31, 32, 33, 34, 35, 36

"TORRENS TITLE"

ST
 62' wide

TERMS 1/3 Cash, Balance in 12 Months
 at 5% Interest per annum
 payable Quarterly.

ATCHISON & SCHLEICHER
 Licensed Surveyors
 Under R. P. Act
 Eldon Chamber 92 Pitt St

All measurements subject to Dep. Plan.

William Brooks & Co. 270, Sydney



The Hale Estate was formed from the residue of one of the lots affected by the SWSOOS pipeline. It was offered in 1913 and again in 1916.

HALE ESTATE BOTANY

Auction Sale on the Land

SAT. 12th APRIL 1913 AT 3 P.M.

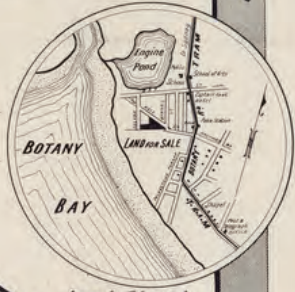
H-W-HORNING & CO.

Auctioneers 131 Pitt St Sydney.

Solicitors to the Estate

MACGREGOR & PALMER

131 Pitt St Sydney.



Local Sketch

TORRENS TITLE

LULAND ST	2	3/7 7/4	50 7/4	HALE ST
	1	3/7 5/4	50 1/4	
		3/7 1/4	50 1/4	

BYRNES ST

to the Tram

TERMS • £2 deposit per lot,
balance £1 per lot per month,
Interest 5%.

F.L. ALEXANDER
licensed Surveyor R.P. Act
William St Granville

All measurements subject to Dept Plan.

F. Cunningham & Co. Ltd., Litho, Sydney.

SANDGATE BOTANY
2
First Class Marine Villas also
8 Grand Building Sites
TO BE SOLD ON THE GROUND NEW YEARS DAY 1885
LOUIS COHEN

TERMS. 10% Deposit 15% 3 Months and the balance by Pro Notes at 1, 2 & 3 Years 6% Int.

DEWSBURY RD
 14 13 12 11 10 9 8
 1 2 3 4 5 6 7

SANDGATE RD
 29 28 27 26 25 24 23 22 21 20 19 18 17 16 15 14 13 12 11 10 9 8 7 6 5 4 3 2 1

FOLKESTONE PARADE
 1 2 3 4 5 6 7 8 9 10 11 12 13 14 15 16 17 18 19 20 21 22 23 24 25 26 27 28 29

CHELMSFORD AVENUE
 1 2 3 4 5 6 7 8 9 10 11 12 13 14 15 16 17 18 19 20 21 22 23 24 25 26 27 28 29

BOTANY RD
 1 2 3 4 5 6 7 8 9 10 11 12 13 14 15 16 17 18 19 20 21 22 23 24 25 26 27 28 29

ESPLANADE
 1 2 3 4 5 6 7 8 9 10 11 12 13 14 15 16 17 18 19 20 21 22 23 24 25 26 27 28 29

BOTANY BAY
 PROPOSED JETTY

C.A. ATCHISON
 Licensed Surveyor
 140-142 Pitt Street Sydney

Sketch
 Local
 Botany Bay
 Sydney
 Note: Sketch, lot at Sale

SANDGATE BOTANY
TO BE SOLD ON THE GROUND, ON Saturday 5th November at 3 P.M.
HARDIE & GORMAN

LOCAL
 Botany Bay
 Sydney
 Note: Sketch, lot at Sale

DEWSBURY RD
 14 13 12 11 10 9 8
 1 2 3 4 5 6 7

SANDGATE RD
 29 28 27 26 25 24 23 22 21 20 19 18 17 16 15 14 13 12 11 10 9 8 7 6 5 4 3 2 1

FOLKESTONE PARADE
 1 2 3 4 5 6 7 8 9 10 11 12 13 14 15 16 17 18 19 20 21 22 23 24 25 26 27 28 29

CHELMSFORD AVENUE
 1 2 3 4 5 6 7 8 9 10 11 12 13 14 15 16 17 18 19 20 21 22 23 24 25 26 27 28 29

BOTANY RD
 1 2 3 4 5 6 7 8 9 10 11 12 13 14 15 16 17 18 19 20 21 22 23 24 25 26 27 28 29

ESPLANADE
 1 2 3 4 5 6 7 8 9 10 11 12 13 14 15 16 17 18 19 20 21 22 23 24 25 26 27 28 29

BOTANY BAY
 PROPOSED JETTY

C.A. ATCHISON
 Licensed Surveyor
 140-142 Pitt Street Sydney



SANDGATE ESTATE
BOTANY

CLEARANCE SALE ON THE GROUND ON SATURDAY 17th NOVEMBER
at 3 O'clock. By
HARDIE & GORMAN.

THE TORRENS' SPECIAL TERMS.
TERMS:
15 PER CENT DEPOSIT
BALANCE IN 24 MONTHLY
PAYMENTS.
NO INTEREST.

Colliver: 16 17 18 19 20 21 22 23 24 25 26 27 28 29 30 31 32 33 34 35 36 37 38 39 40 41 42 43 44 45 46 47 48 49 50 51 52 53 54 55 56 57 58 59 60 61 62 63 64 65 66 67 68 69 70 71 72 73 74 75 76 77 78 79 80 81 82 83 84 85 86 87 88 89 90 91 92 93 94 95 96 97 98 99 100

NOTE: The enclosed lots are sold.

CAATCHISON, C.E.
Licensed Surveyor.
Opposite City Hall

WILLIAMS & FLETCHER

SANDGATE ESTATE,
BOTANY.

120 Building Allotments 120

Title—TORRENS' ACT.

TERMS:—One Pound Deposit on each Lot, and the Balance by Monthly Instalments.

NOTE:—Within Three-quarters of an Hour of the City.

THE LAND AND WATER VIEWS CANNOT BE SURPASSED.

AUCTIONEERS:
HARDIE and GORMAN,
133 PITT STREET.

MARINE SUBURB,
BOTANY.

IMPORTANT LAND SALE.

CLEARANCE SALE
SANDGATE ESTATE

Botany is a favourite Suburb, connected with the Metropolis by a good service of Trams.

SALE DAY:
SATURDAY, SEPTEMBER 24th, 1892.

AUCTIONEERS:
HARDIE & GORMAN
133 PITT STREET.

SANDGATE ESTATE,
BOTANY.

FREQUENT SERVICE OF TRAMS.

CHEAP TRAM FARES.

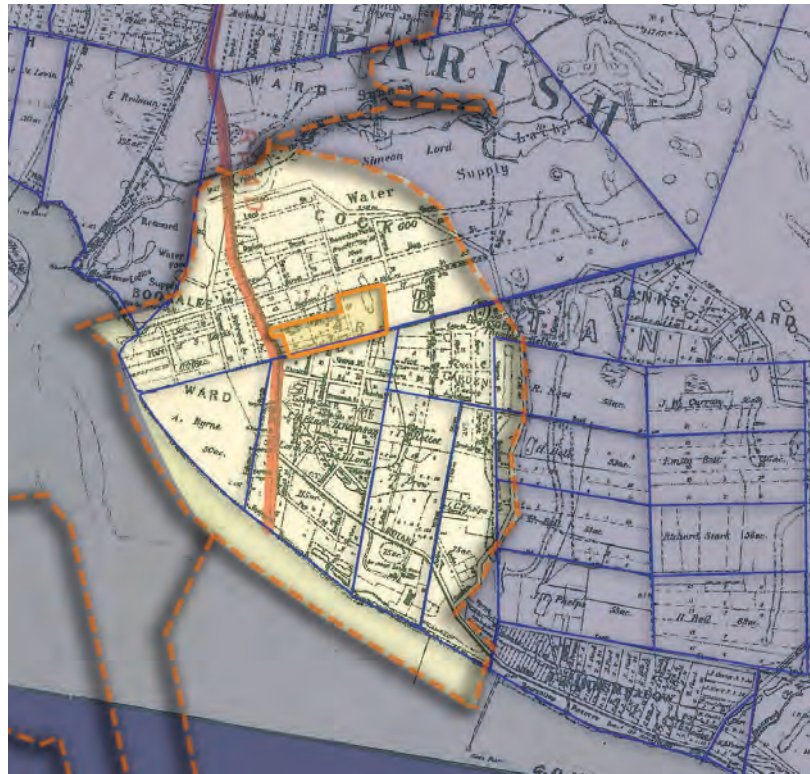
Over Forty Trams daily to and from the City between the hours of 5.30 a.m. and 11.30 p.m., giving every travelling facility to the Artisan, Clerk, Business Man and Civil Servant.

GOOD ROADS AT BOTANY.

PURE AIR AND GOOD SOIL.

Sale on the Ground at 3 o'clock.
SATURDAY, 24th SEPTEMBER, 1892.

AUCTIONEERS:
HARDIE and GORMAN,
133 PITT STREET.



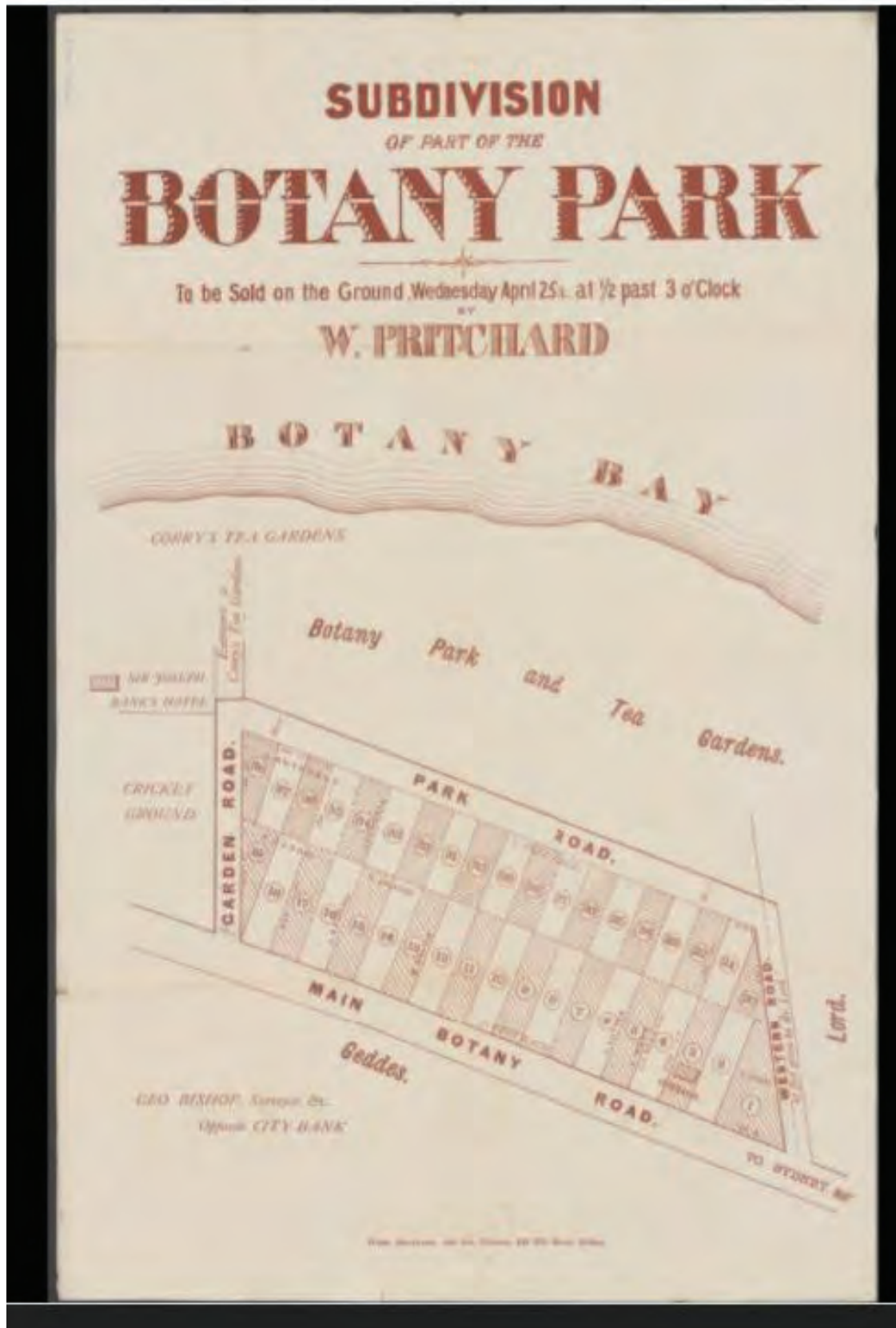
1928 - town hall



1324/87

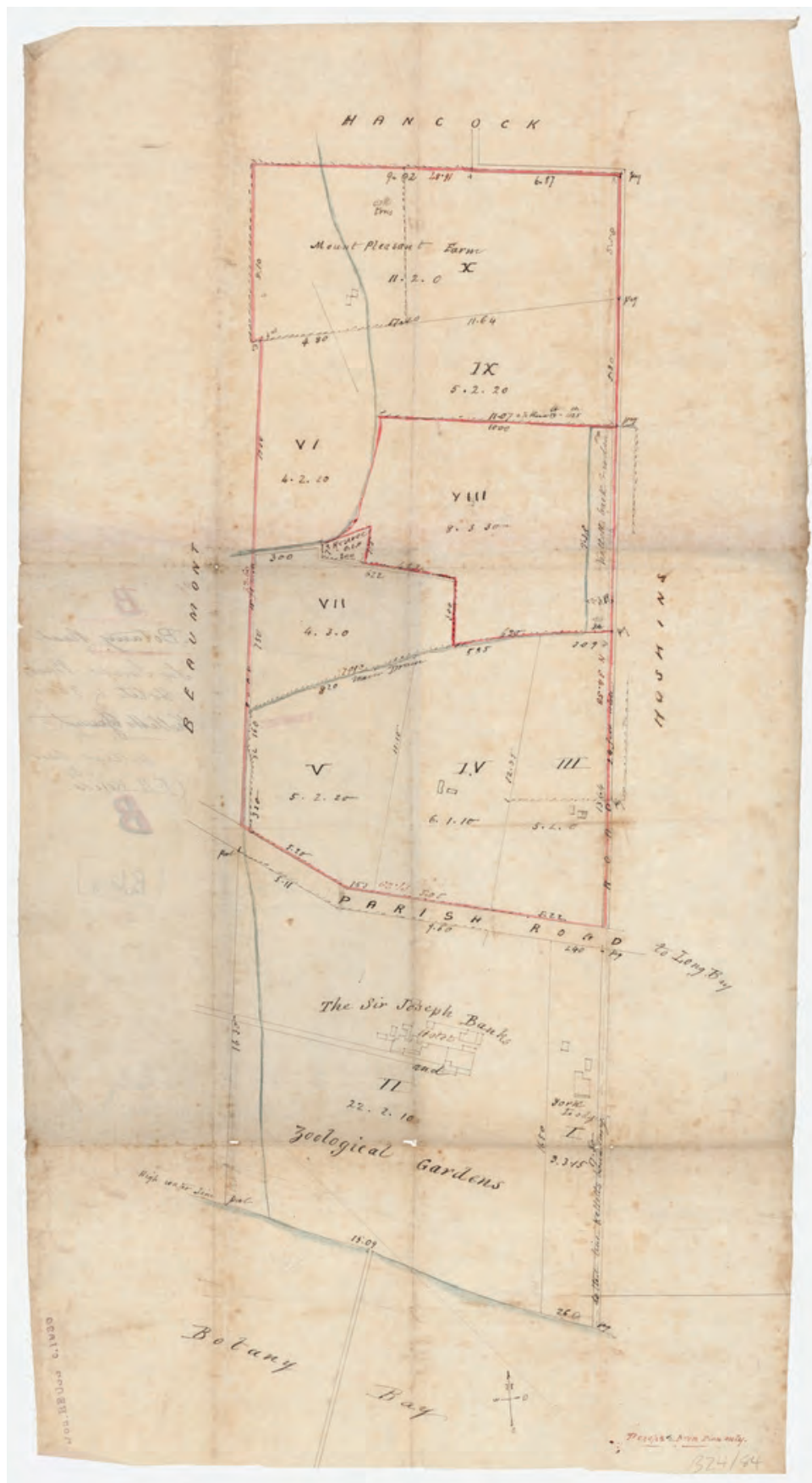


1880 sale of "Botany Park" located between Botany Road and Correy's Tea Gardens. Note the location of an earlier cottage on lot 3 (bottom right corner of the land).



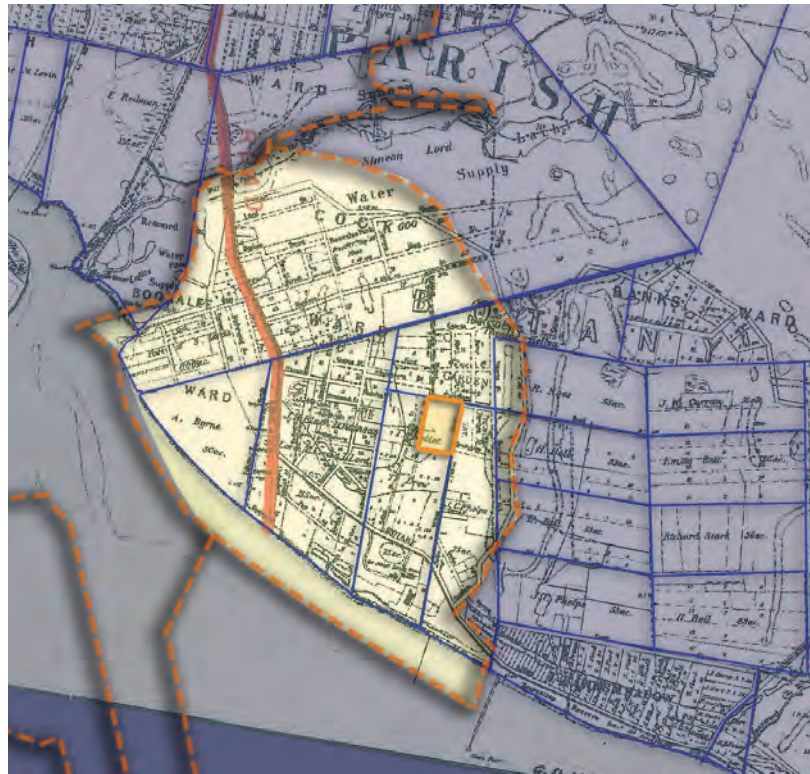



The sale of the Sir Joseph Banks Hotel grounds was a protracted process, with releases in 1902 through to 1936. A sample of the many flyers is shown here, and overleaf.





Early (n.d.; 19th century) plans of the original use of Kellett's land (left) and the grounds of the (sir Joseph Banks Hotel (above)

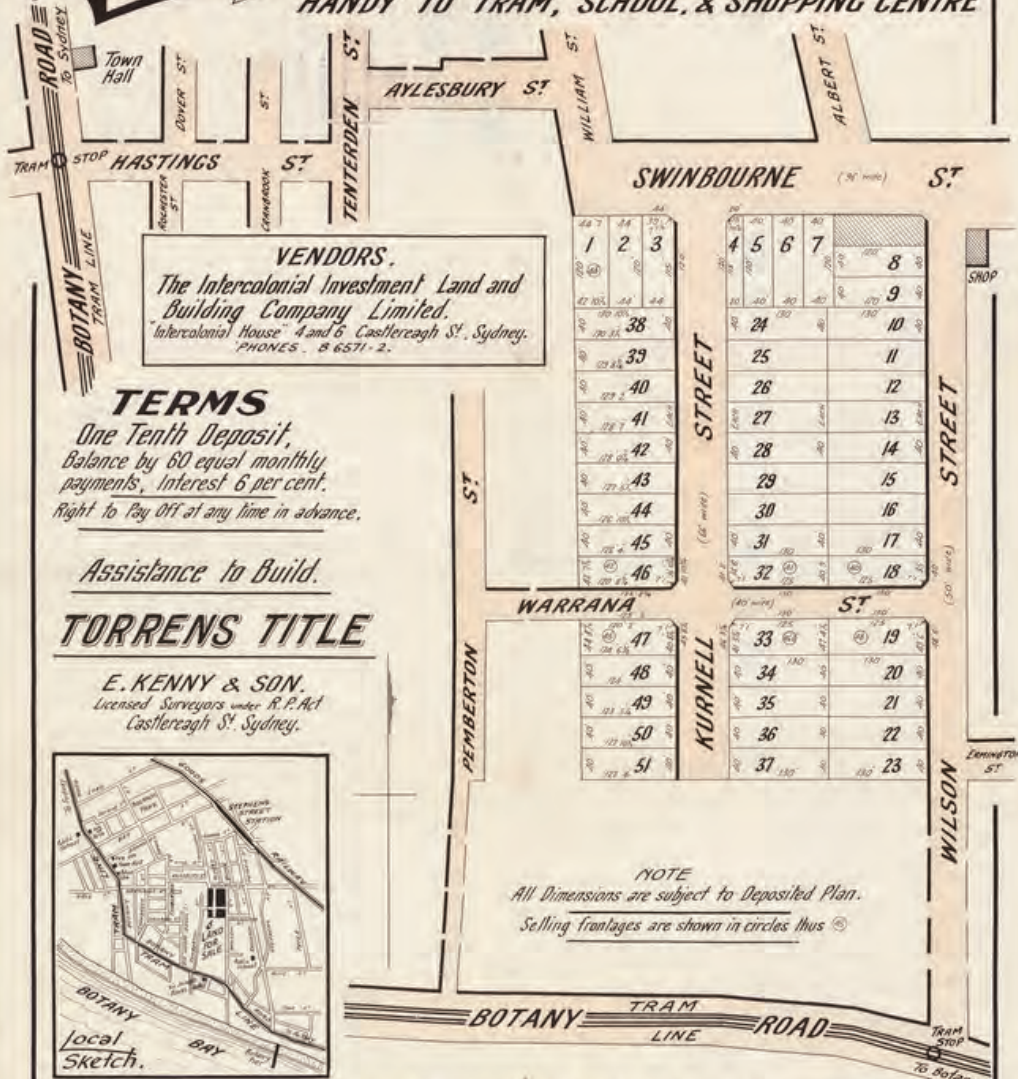




**WILSON
ESTATE**

BOTANY

*51 GOOD HOME SITES.
HANDY TO TRAM, SCHOOL, & SHOPPING CENTRE*




VENDORS.
The Intercolonial Investment Land and Building Company Limited.
Intercolonial House 4 and 6 Castlereagh St., Sydney.
PHONES. 8 6571-2.

TERMS
*One Tenth Deposit,
Balance by 60 equal monthly
payments, Interest 6 per cent.
Right to Pay Off at any time in advance.*

Assistance to Build.

TORRENS TITLE
E. KENNY & SON.
Licensed Surveyors under R.P. Act
Castlereagh St., Sydney.



Local sketch.

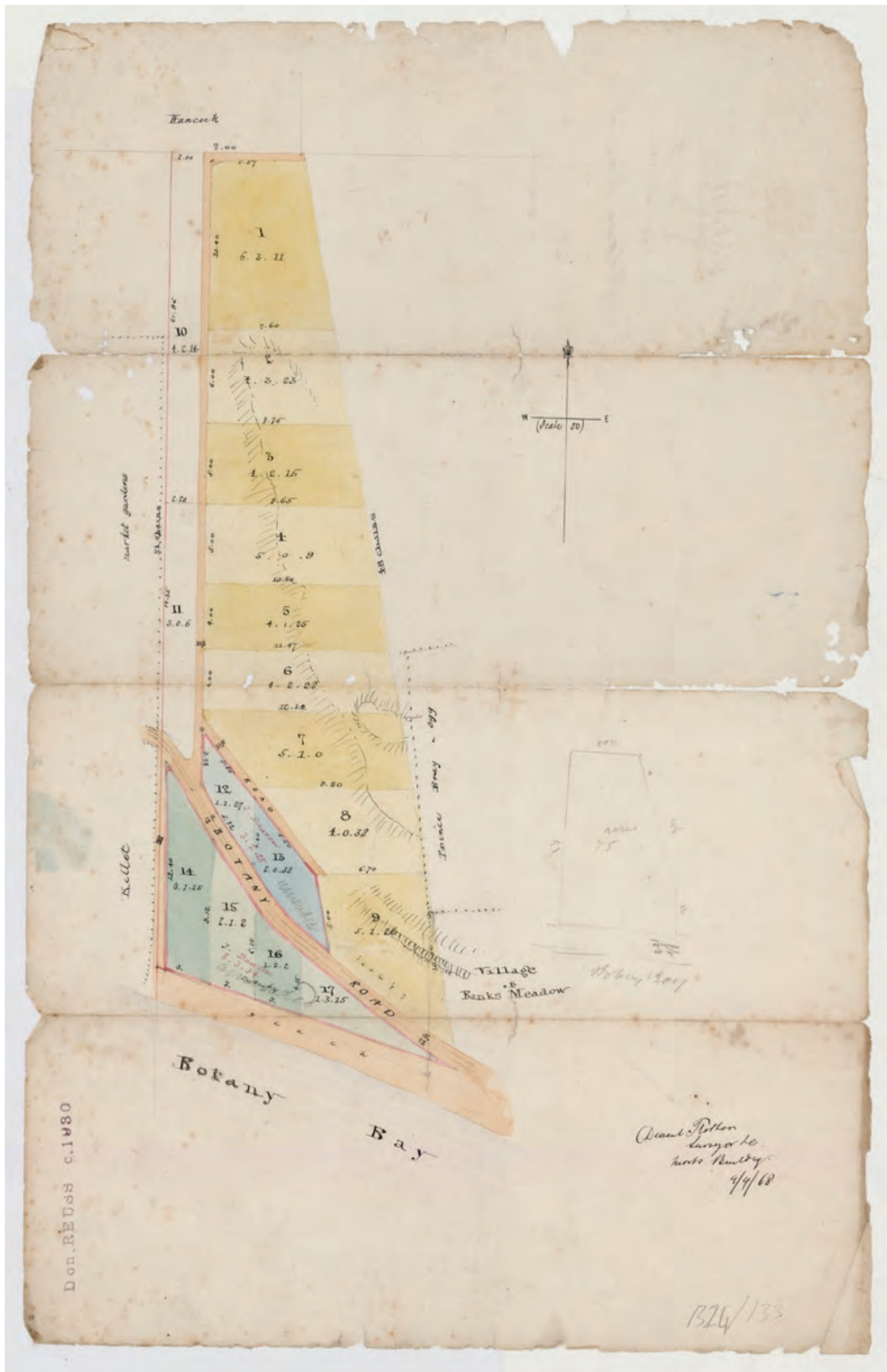
NOTE
*All Dimensions are subject to Deposited Plan.
Selling frontages are shown in circles thus Ⓢ*

FOR AUCTION SALE ON THE GROUND AT 3 P. M. ON
SATURDAY 19TH JANUARY 1929.
Auctioneers PEACH BROS 76 PITT ST. SYDNEY.
and at KOGARAH, ROCKDALE, and BEXLEY. City Phones B. 7445-6.

F. Cunningham & Co. Ltd., Litho, Sydney



1868 sketch of the proposed subdivision of J. Phelps' land into large lots, known as the Banks Hill Estate.





VALUABLE VILLA SITES
BANKS HILL ESTATE
BOTANY


The main map shows a grid of lots. Lots 1-6 are in the top left, 7-12 in the bottom left, 13-19 in the bottom middle, and 20-28 in the top right. A large 'SEC' is written across the middle. Wilson Street runs vertically on the left, Brighton St runs horizontally on the top right, and Main Botany Road runs diagonally at the bottom left. A compass rose is centered below the main map.

For Sale by Auction on the
GROUND
on Saturday 4th March
At 3 O'CLOCK p.m. 1882
RICHARDSON & WRENCH Auctioneers.

The local sketch map shows the area around Banks Hill Estate. It includes labels for 'LAND FOR SALE', 'MARKET GARDENS', 'CORRY'S TEA GARDENS', 'WILSON STREET', 'BANKS HILL', 'BOTANY BAY', 'GEDES ST', and 'MAIN BOTANY ROAD'. A small building is labeled 'Banks'.

GIBBS, SHALLARD, & CO., PRINTERS.

W. H. BINSTED
Licensed Surveyor
88 Pitt St - SYDNEY.



BOTANY

For Sale on the Ground Satdy. March 7th
AT 3 O'CLOCK

SMITH CHAPMAN & SMITH

AUCTIONEERS 458 GEO ST.
Hancock's Garden


AYLSBURY R^d
HANCOCK ST

25	24
26	23
27	22
28	21
29	20
30	19
31	18
32	17
33	16
34	15
35	14
36	13
37	12
38	11
39	10
40	9

ERMINGTON ST

Free Tram Tickets
On Sale day

Local Sketch

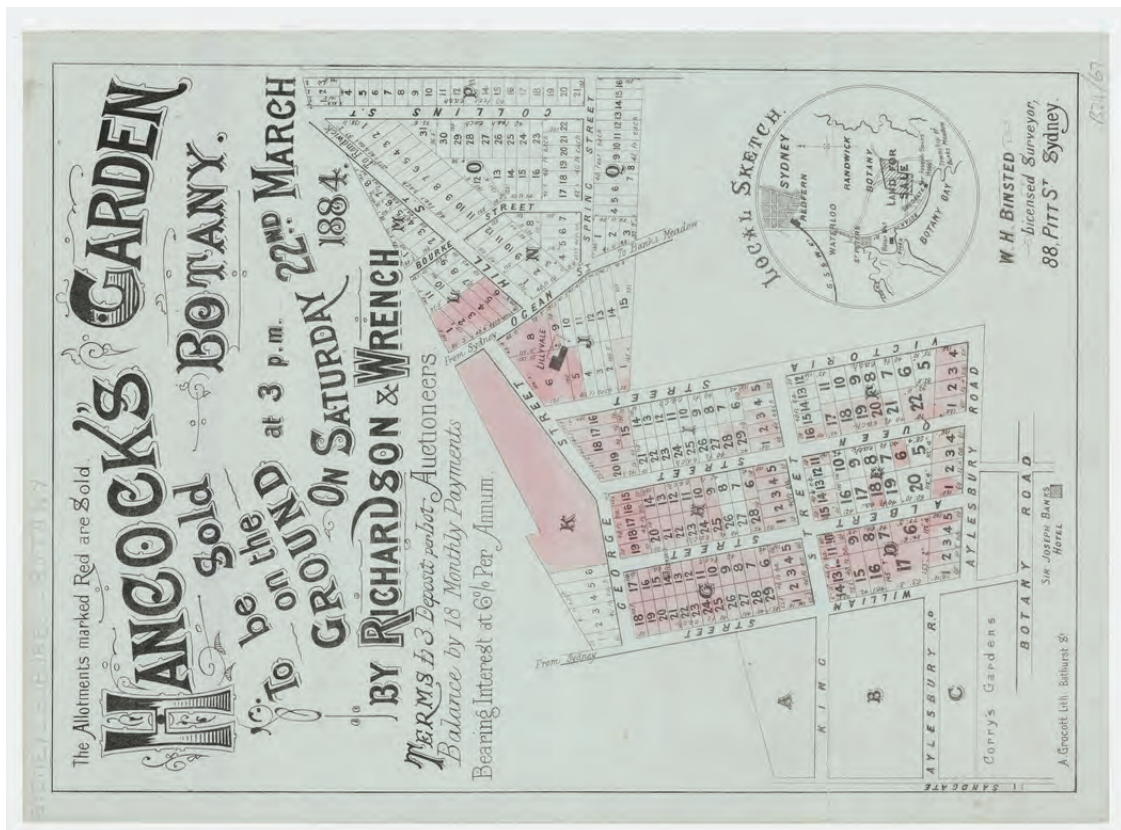


TERMS
10/- Deposit
Balance 10/-
per month
Int. 6%

Geo. Bishop
Surveyor & Co.
130 Pitt St

Gibbs Shilland & Co. Printers





HILL VIEW ESTATE

Botany

ELEVATED BUILDING SITES

Panoramic Views of Botany Bay, Waverley and the City.
Handy to 2^d Bus, Tram, Town Hall, Public School &c
BOTANY IS THE LEADING MANUFACTURING SUBURB.

SPRING ST

OCEAN STREET

VICTORIA STREET

KING ST

LANE 20' WIDE

1 2 3 4 5 6 7 8 9 10 11

12 13 14 15 16 17 18 19 20 21 22 23

Terms—
£1 DEPOSIT
10% MONTHLY
NO INTEREST

ASSISTANCE TO BUILD

W. F. MALCOLM
 Licensed Surveyor
 94 Pitt Street

FOR PRIVATE SALE BY
THE INTERCOLONIAL INVESTMENT
LAND & BUILDING CO. LTD
 ESTABLISHED 1895
14 MOORE ST SYDNEY
 W. J. Douglas, Manager

LOCAL SKETCH

BOTANY BAY

LAND SALE

1900