



# Kingsgrove – Bexley North Community Centre

This facility is located in a small park in Shaw Street, Kingsgrove. This facility was renovated in 2011 with new kitchen, flooring and painting.

The kitchen has access to hot water, microwave and oven. All utensils including coffee cups must be supplied by user groups.

The setting makes it ideal for a playgroup, however can also be used for senior's activities and meetings.

No private functions are permitted in hall. No smoking allowed. Inspection is recommended.

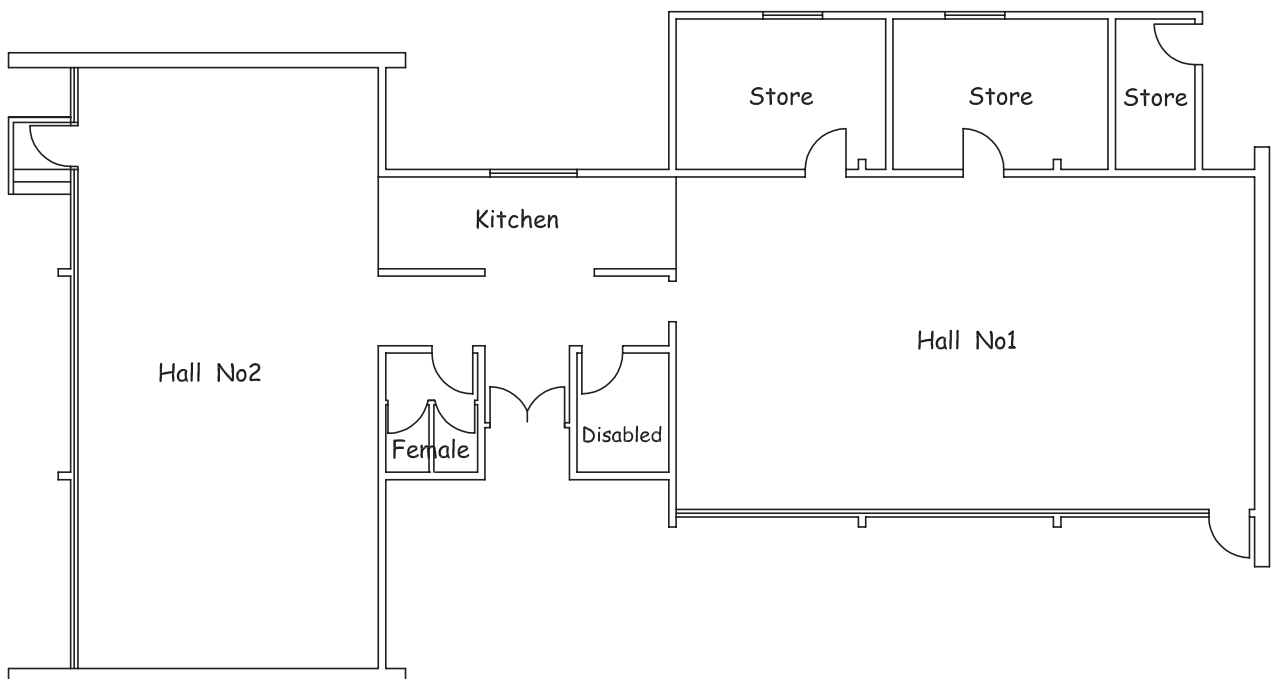
**Address:** 69A Shaw Street, Kingsgrove



|  |             |
|--|-------------|
| Capacity                                     | 50          |
| Chairs                                       | 25          |
| Tables                                       | 5           |
| Air Conditioning                             | Yes         |
| Audio Visual                                 | No          |
| Disabled Access                              | Yes         |
| Disabled Toilets                             | No          |
| Access                                       | Key         |
| Parking                                      | On Street   |
| Size   | 273 sqm     |
| Hours of Operation<br>(minimum hire 3 hours) | 8am to 10pm |

TURN FOR FLOOR PLAN ►►

# Kingsgrove / Bexley North Community Centre Floor Plan



69A Shaw Street  
Kingsgrove

Eastgardens Customer Service Centre, 152 Bunnerong Road  
Rockdale Customer Service Centre, 444-446 Princes Highway  
Phone **1300 581 299** | **9562 1666** Email **[council@bayside.nsw.gov.au](mailto:council@bayside.nsw.gov.au)**  
Web **[www.bayside.nsw.gov.au](http://www.bayside.nsw.gov.au)**

