



# Arncliffe Seniors Centre

Arncliffe Seniors Centre is located in Stanley Street, Arncliffe located in the Coronation Hall facility on the ground floor.

There is a kitchen with access to hot water, microwave and oven. All utensils including coffee cups must be supplied by user groups.

The hall is ideal for meetings/training courses and seniors activities. Inspection is recommended.

No private functions are allowed in this hall.  
No smoking allowed.

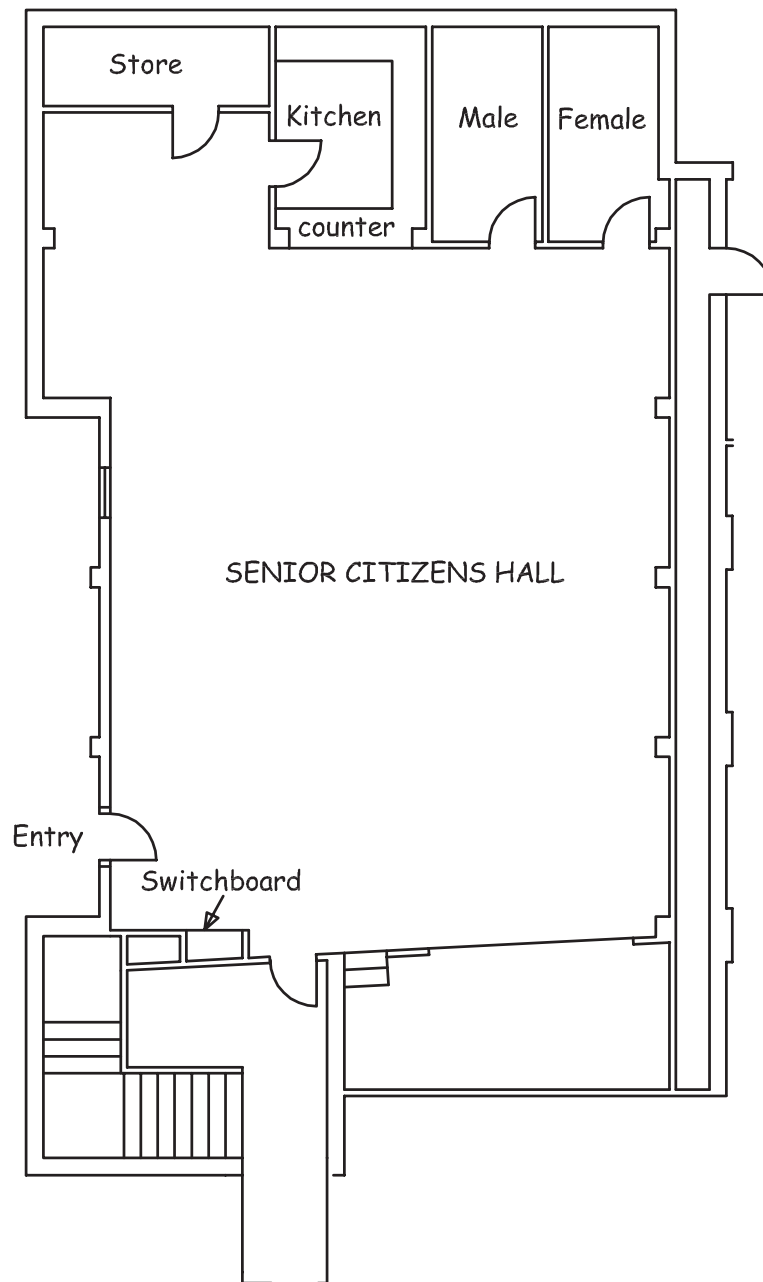
**Address:** 23-25 Barden Street, Arncliffe  
(entrance from Stanley Street)



Capacity	100
Chairs	100
Tables	10
Air Conditioning	Yes
Audio Visual	No
Disabled Access	Yes
Disabled Toilets	No
Access	Key
Parking	On Street
Size	130 sqm
Hours of Operation (minimum hire 3 hours)	8am to 10pm

TURN FOR FLOOR PLAN ►►

# Arncliffe Seniors Centre Floor Plan



23-25 Barden Street (entrance from Stanley Street)  
Arncliffe

Eastgardens Customer Service Centre, 152 Bunnerong Road  
Rockdale Customer Service Centre, 444-446 Princes Highway  
Phone **1300 581 299** | **9562 1666** Email **[council@bayside.nsw.gov.au](mailto:council@bayside.nsw.gov.au)**  
Web **[www.bayside.nsw.gov.au](http://www.bayside.nsw.gov.au)**

