



# Alf Kay Eastlakes Community Centre

The Alf Kay Eastlakes Community Centre is located next to Florence Avenue Reserve.

The facility has a large semi commercial kitchen for the auditorium hire and a small kitchen for the large and small meeting room hire.

Access to hot water, microwave, fridge, oven. All utensils including coffee cups must be supplied by the user group. The facility is Air Conditioned. The setting makes it ideal for meetings, seminars, educational training courses, large groups and activities.

The Auditorium includes a parquetry dance floor. In addition there is a large (30 people) and small (12 people) adjoining meeting rooms.

Inspection is recommended.

**Address:** 2 Florence Ave, Eastlakes



Capacity	100
----------	-----

Chairs	200
--------	-----

Tables	24
--------	----

Air Conditioning	Yes
------------------	-----

Audio Visual	No
--------------	----

Disabled Access	Yes
-----------------	-----

Disabled Toilets	Yes
------------------	-----

Access	Thru Caretakers
--------	-----------------

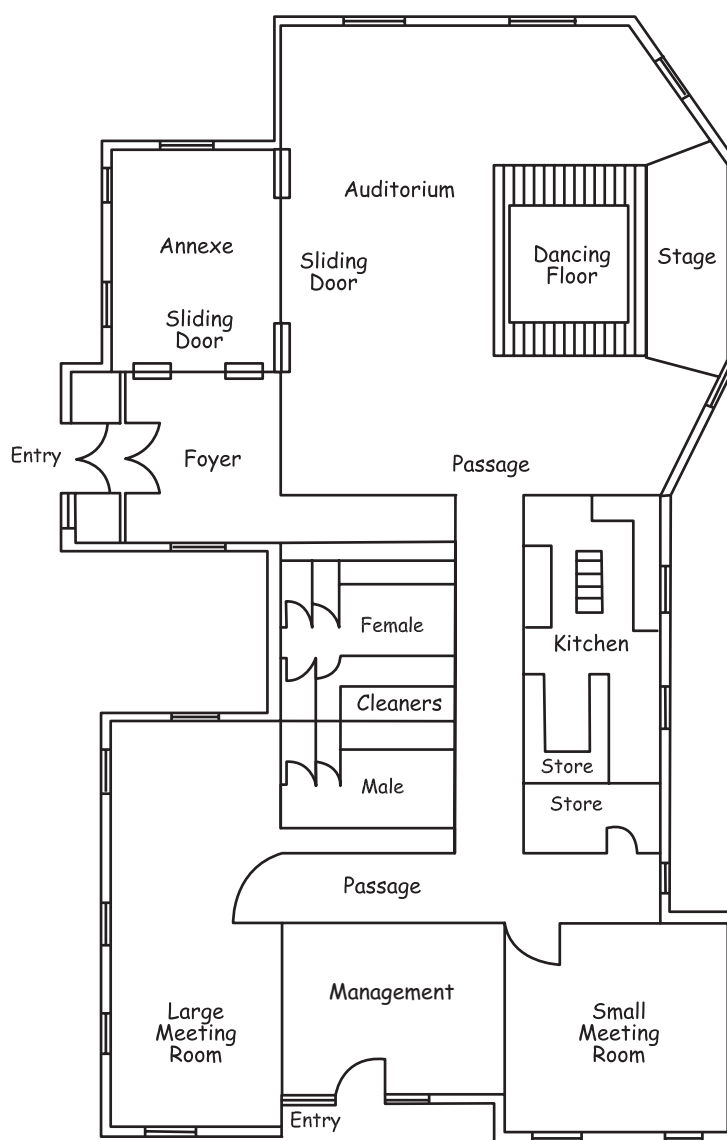
Parking	On Site
---------	---------

Size	162 sqm
------	---------

Hours of Operation	9am to 12pm
--------------------	-------------

TURN FOR FLOOR PLAN ►►

# Alf Kay Eastlakes Community Centre Floor Plan



2 Florence Ave, Eastlakes

Eastgardens Customer Service Centre, 152 Bunnerong Road  
Rockdale Customer Service Centre, 444-446 Princes Highway  
Phone **1300 581 299** | **9562 1666** Email [council@bayside.nsw.gov.au](mailto:council@bayside.nsw.gov.au)  
Web [www.bayside.nsw.gov.au](http://www.bayside.nsw.gov.au)

